



CHEWELAH

SCHOOL DISTRICT 36

We Teach To Ready Our Youngest Generations

Board of Director's Regular Meeting

January 18, 2023

6:30 PM at Gess Elementary, 405 E Lincoln St., and virtually via Zoom

1. Call meeting to order
2. Flag salute
3. Modifications to the agenda
4. Approval of the agenda
5. Approval of the minutes
 - November 16, 2022 board meeting
 - December 1, 2022 work session
6. Call for nominations for chairperson to serve during the ensuing year – Superintendent Perrins
7. Election of chairperson by roll call vote
8. Assumption of office by newly elected chairperson
9. Call for nominations for vice chairperson to serve during the ensuing year – Newly-elected chairperson
10. Election of vice chairperson by roll call vote
11. Call for nominations for calendar committee representative – Newly elected chairperson
12. Election of calendar committee representative by roll call vote
13. Call for nominations of WIAA representative – Newly elected chairperson
14. Election of WIAA representative by roll call vote
15. School Board Recognition Month
 - Governor's Proclamation
 - Student performances
 - Reception
16. Public Comments: Individuals interested in speaking are asked to sign the public comment sign-in form. Speaking time for public comments is limited to three minutes. Please recognize the Board has the option to decline verbal public comments and only allow written public comments to be submitted.
*Please know that concerns related to personnel are not heard in a regular open meeting but may be heard in an executive session with the Superintendent and Board of Directors.
Disagreements with staff decisions must be submitted following the process outlined in district Policy 4220 Complaints Concerning Staff or Programs or other pertinent grievance procedures.*
17. School Community Presentations
 - A. Student ASB Director Keona Ross
 - B. Staff recognition – Kallie Tilla
 - C. Professional Learning Communities (PLC) update
 - D. Maintenance and facilities update - Jason Tapia
 - E. Jenkins Jr/Sr High Principal Report (blue)
 - F. Student Support Services report (pink)
 - G. Gess Elementary Mid-Year Showcase
 - H. Business Manager – Mara Schneider
 - ✓ Financial report

- ✓ Enrollment
- ✓ Food service funding update

18. Consent agenda
 - A. Approve financial reports
 - B. Approve general fund voucher numbers 122339-122363 for a total of \$35,267.69; ACH for \$838.54; and voucher numbers 122371-122425 for a total of \$182,755.77
 - C. Approve capital projects fund voucher numbers 122364-122366 for a total of \$29,452.30; and ACH for \$691.45
 - D. Approve ASB voucher numbers 122367-122368 for a total of \$1,102.53; ACH for \$173.11; and voucher numbers 122426-122428 for a total of \$3,756.61
 - E. Approve payroll in the amount of \$875,996.80
 - F. Personnel:
 1. Approve resignation of Heidi Wulczynski as high school tennis assistant coach
 2. Approval to post for high school tennis assistant coach
19. Superintendent Report
20. Old Business
 - A. Second reading new Policy 1815 Ethical Conduct for School Directors (gray)
 - B. Second reading Policy 5221/5231 Length of Workday (pink)
21. New Business
 - A. Approve Jenkins' FFA Floriculture Team Student Travel Proposal for the following overnight trips to competitions: (cherry)
 - Yakima, February 2-3, 2023
 - Wapato, February 24-25, 2023
 - Snohomish, March 23-25, 2023
 - B. First reading new Policy 1825 Addressing School Director Violations (yellow)
 - C. First reading new Policy 3225 School Based Threat Assessment (tan)
 - D. First reading Policy 3231 Student Records (green)
 - E. First reading Policy 3421 Child Abuse, Neglect and Exploitation Prevention/Child Abuse and Neglect (buff)
 - F. First reading Policy 2411 Certificate of Educational Competency/High School Equivalency Certificate (lavender)
22. Board Reports
 - A. Director Steve Phillips
 - B. Director Bryan Tidwell
 - C. Director Dan Krouse
 - D. Director Theolene Bakken
 - E. Chairperson Judy Bean
23. Future Meeting Agenda Topics
24. Potential executive session
25. Adjourn

Join meeting virtually via Zoom at <https://uso2web.zoom.us/j/87464209951>

Individuals with disabilities who may need a modification to participate in a meeting should contact the superintendent's office, at 685-6800, ext. 1002, no later than three days before a regular meeting and as soon as possible in advance of a special meeting so that special arrangements can be made.

CHEWELAH SCHOOL DISTRICT #36
BOARD OF DIRECTORS' REGULAR MEETING
District Office, 210 N Park Street, and virtually via Zoom
December 21, 2022

Chairperson Judy Bean called the meeting to order at 6:36 PM. Directors Theolene Bakken and Bryan Tidwell were present. Directors Dan Krouse and Steve Phillips were excused. Superintendent Jason Perrins, Business Manager Mara Schneider, and Administrators Julie Price and Erin Dell were present. One audience member attended in person and two attended virtually. Following the flag-salute, the first item of business was:

MODIFICATIONS TO THE AGENDA: Due to less than a full board being present, Director Tidwell moved to push the board officer elections to the January regular meeting. MC

APPROVAL OF THE AGENDA: Director Tidwell moved to approve the agenda as amended. MC

APPROVAL OF THE MINUTES:

- Chairperson Bean mentioned that her visit to a school reported in the fourth item under Superintendent Report should read that she visited the secondary school instead of the elementary. Director Tidwell moved to approve the minutes of the November 16, 2022 board meeting as amended. MC
- Director Bakken moved to approve the minutes of the December 1, 2022 work session as written. MC

PUBLIC COMMENTS: None.

SCHOOL COMMUNITY PRESENTATIONS:

- A. Student ASB Director Keona Ross did not attend the meeting.
- B. Maintenance and Facilities Supervisor Jason Tapia did not attend the meeting.
- C. Jenkins Jr./Sr. High School Principal Shawn Anderson provided a written principal report and activities calendar. Gess Elementary Principal Julie Price presented a written principal report.
- D. Quartzite Learning Principal and Student Support Services Director Erin Dell presented written principal and student supports reports. She also mentioned that the District received a grant to support the recruitment, retention, and support of beginning Special Education teachers.
- E. Business Manager Mara Schneider presented the current financial and enrollment reports. She also provided a funding update including an annual revenue comparison; a breakdown of federal grants, state grants and categorical programs; grants funds being utilized in the 2022-23 school year; and the November Apportionment report from OSPI.

CONSENT AGENDA: Chairperson Bean submitted for approval of those expense reimbursement claims certified as required by RCW 42.24.090 that have been made available to the Board. After a brief discussion of the consent agenda items, Director Bakken moved to approve the consent agenda. MC

- A. Approve financial reports
- B. Approve general fund voucher numbers 122103-122155 for a total of \$110,655.55; voucher numbers 122200-122231 for a total of \$52,800.41; and voucher numbers 122241-122308 for a total of \$142,677.39
- C. Approve capital projects fund voucher numbers 122156-122158 for a total of \$7,002.67; voucher numbers 122232-122236 for a total of \$125,554.16; and voucher number 122309 for \$53,743.52 Approve ASB voucher numbers 122098-122101 for a total of \$3,113.89
- D. Approve ASB voucher numbers 122159-122166 for a total of \$8,150.57; voucher numbers 122237-122240 for a total of \$1,280.55; and voucher numbers 122310-122314 for a total of \$4,219.73
- E. Approve payroll in the amount of \$915,966.81
- F. Personnel:
 1. Approve resignation of Walt Salisbury as groundskeeper
 2. Approval to post for a groundskeeper
 3. Approve resignation of Brian Harting as a Gess Elementary teacher
 4. Approve resignation of Jeff Kersey as a Gess Elementary teacher
 5. Approval to post for two elementary teachers
 6. Approval to post for a Gess Elementary Special Education teacher
 7. Approval to hire Jacob Lee as junior high boys basketball head coach

SUPERINTENDENT REPORT:

Superintendent Perrins reported on the following:

- Reminder of board special meeting January 11, 2023, for continued Professional Learning Communities (PLC) training
- Presented a letter from OSPI stating that the District met all regulatory criteria in the Child Nutrition Services' recent review of goods and services procurement processes

- Daughter recently graduated from college and is in the process of becoming an emergency substitute teacher with the District
- Recently obtained his grandfather's teaching certificate dated 1954

OLD BUSINESS: None.

NEW BUSINESS:

- A. Director Bakken moved to approve the dates of the board agenda calendar for 2023. Some adjustments may be made to the agenda items for each meeting. MC
- B. Director Tidwell moved to approve the purchase of a school bus from RWC Group in the amount of \$155,495.87. MC
- C. Director Bakken moved to approve the first reading of Policy 3131 Transfers. MC
- D. Director Bakken moved to approve the first reading of Policy 3141 Nonresident Students. MC
- E. First reading new Policy 1815 Ethical Conduct for School Directors.
- F. Director Bakken moved to approve the first reading of Policy 5510 Retirement Programs. MC
- G. First reading Policy 5221/5231 Length of Workday.
- H. Director Bakken moved to retire Policy 9320 Security. MC
- I. Director Tidwell moved to retire Policy 9310 Safety Program. MC
- J. Director Bakken moved to approve the first reading of Policy 6890 State Environmental Policy Act Compliance. MC
- K. Director Tidwell moved to approve the first reading of Policy 6883 Closure of Facilities. MC
- L. Director Tidwell moved to approve the first reading of Policy 3416 Medication at School. MC
- M. Director Bakken moved to accept Stewart Signs' quote for double sided full color LED Sign/Message Center in the amount of \$52,880.00 plus tax. MC

BOARD REPORTS:

- Director Tidwell gave no report.
- Director Bakken gave no report.
- Chairperson Bean gave no report.

FUTURE MEETING AGENDA TOPICS

- Special Meeting January 11, 2023, for continued PLC training

EXECUTIVE SESSION

Chairperson Bean adjourned the regular meeting at 7:48 PM for a three-minute recess and an executive session to review the performance of a public employee in accordance with RCW 42.30.110(1)(g). The executive session is expected to end at 8:22 PM. The executive session ended at 8:22 PM and the regular meeting reconvened.

With there being no other business, the regular meeting was adjourned at 8:23 PM. The next regular board meeting will be Wednesday, January 18, 2022, at 6:30 PM at the district office and virtually via Zoom.

Judy Bean
Chairperson

Jason Perrins
Secretary of the Board

CHEWELAH SCHOOL DISTRICT #36
BOARD OF DIRECTORS
WORK SESSION
District Office, 210 North Park Street
January 5, 2023

Chairperson Judy Bean called the work session to order at 6:30 PM. Directors Dan Krouse, Steve Phillips, and Bryan Tidwell were present. Director Theolene Bakken was excused. Superintendent Jason Perrins and Administrators Shawn Anderson, Julie Price, Erin Dell, and Tom Skok were present. Two audience members attended. Following the flag salute, the first item of business was:

Director Tidwell moved to approve the agenda as written. MC

Director Phillips moved to approve the first reading of Policy 3120 Enrollment. MC

Director Phillips moved to approve the first reading of Policy 3143 Notification and Dissemination of Information About Student Offenses and Notification of Threats of Violence or Harm. MC

Director Phillips moved to retire Policies 3144 Release of Information Concerning Student Sexual and Kidnapping Offenders, 4316 Notification of Threats of Violence or Harm, and 4413 Release of Information Concerning Sexual Offenders. MC

Director Tidwell moved to approve the first reading of Policy 6970 Naming Schools, Facilities, and Teams, and Use of School Mascot, Images, or Logo including the optional language offered by WSSDA, "School and team mascots, logos, or images will not be of Native American names, symbols or images unless the local tribe has approved the use by appropriate enactment or resolution." He withdrew the motion and made a new motion to approve the policy with clarification that the optional language replaces the second paragraph of the draft policy. MC

Superintendent Perrins and Chairperson Bean led the Board, administrators, and staff in attendance in a discussion and activities about student engagement, student achievement, and brain basics and the Board's role in student learning. They presented documents titled Brain Basics, Principles of Brain-based Learning, and Frayer Model Engagement and slides titled Board of Directors Leadership with Student Learning.

Superintendent Perrins reported on the following:

- NEW Health is drafting a letter of intent for purchase of the old middle school property
- Facility Committee will meet January 31. Superintendent Perrins and Maintenance and Facilities Supervisor will meet with Ken Murphy of ALCS prior to the committee meeting to discuss the most recent Study and Survey and draft long-range plan.
- February work session will include discussing the February 2024 Replacement Educational Programs and Operations Levy (EP&O)
- City of Chewelah plans to form a parks and recreation committee if grant funding is received and asked Superintendent Perrins to join the committee
- Due to a change in Policy 2005 School Improvement Plans, recommended an update to the content of the school annual reports given during the regular meetings held at the schools in January, February, and March. The Board agreed.
- Sarah Gregory will transition to full-time Special Education Director after a Gess Special Education teacher is hired

Director Phillips, the Board Legislative Representative, presented a summary document of upcoming education-focused bills being put forth during the Washington State legislative session that begins January 9.

With there being no other business, the meeting was adjourned at 7:50 PM. The next regular board meeting will be Wednesday, January 18, 2023, at 6:30 PM at the District Office and virtually via Zoom.

Judy Bean
Chairperson

Jason Perrins
Secretary of the Board

The State of Washington



Proclamation

WHEREAS, the mission of Washington's public school system is to ensure that all students achieve at high levels and possess the knowledge and skills to be responsible members of a democratic society and enjoy productive and satisfying lives; and

WHEREAS, Washington's 295 locally-elected school boards of directors and nine elected educational service district (ESD) boards are the core of the public education governance system in our state, serve more than 1.1 million students, have a combined annual budget of over \$15 billion, and employ approximately 120,000 people; and

WHEREAS, school boards play a crucial role in promoting student learning and achievement by creating a vision, establishing policies and budgets, and setting clear standards of accountability for all involved; and

WHEREAS, school board directors are directly accountable to residents in their districts and regions, serving as a vital link between members of the community and their schools; and

WHEREAS, school boards and ESDs provide a passionate voice of advocacy for public schools and the welfare of school children; and

WHEREAS, it is appropriate to recognize school board directors as outstanding public servants and champions for public education;

NOW, THEREFORE, I, Jay Inslee, Governor of the state of Washington, do hereby proclaim January 2023 as

School Board Recognition Month

in Washington, and I encourage all people in our state to join me in this special observance.

Signed this 4th day of January, 2023

A handwritten signature in blue ink, reading "Jay Inslee".

Governor Jay Inslee



Jenkins JR./SR. High School

January 12, 2023

Board Report

I. Professional Development

This week we participated in three different very important professional development activities. On Monday, our PLC Leadership Team, presented a PowerPoint titled, “Why Professional Learning Communities?” The focus was on establishing Norms, the focus of PLCs, Climate and Culture, Teacher Efficacy, the Four PLC questions, and our next steps in the process. Miss French, Mrs. Watts and I were the Jenkins members of the PLC Leadership Team presenting the information to staff. On February 28-March 2, 2023, members of the PLC Leadership Team will be attending a training in AZ to continue our deep dive into all things PLCs.

On Tuesday our PLC Leadership Team met at the district office to learn more about effective student assessment practices. Most of the information was focused on formative assessment practices in the classroom. As we continue to move forward with selecting our priority standards for our content area classes, this information on how we assess student learning, of these identified proficiency standards, will be very important. The district PLC Leadership Team will be providing staff development in the future.

On Wednesday, our 9th Grade Academic Success Team traveled to Lakeside High School at Nine Mile Falls for our initial grant induction from the Center for High School Success (CHSS) where we will be creating a roadmap for 9th grade success over the course of the next three years. The day was spent reviewing data on the importance of student success at the 9th grade level and its impact on high school graduation rates. After review research, we transitioned to reviewing current Jenkins High School data through a deep data dive, identifying a Problem of Practice (PoP) and then transitioned to Theories of Action to solve our identified problem. The team identified the high number of 9th grade students with one or more semester failing grades as our PoP and then brainstormed specific Theories of Action. We are currently agreeing that the team would like to focus our energy on an action plan that is focused on professional development on High Quality Instructional Grading Practices.

The next steps will be meeting with our CHSS coach to fine tune our plan. Eventually the plan will be part of our School Improvement Plan.

II. Junior High 100% Club

In February, junior high students who have met the 100% Club academic and behavior requirements will be rewarded. This is a traditional method of rewarding some of our most dedicated and hardworking students for the positive impact they have in their school. We are planning a Spokane hockey game at this time. It is usually a night to remember for our students.

III. Active Shooter Drill and Staff Development

There was an active shooter drill in December to practice our protocols during an active shooter or armed intruder scenario. Mr. Skok worked with staff on updates to our protocols and staff relayed information to our students. We also emphasized the importance of prevention with the slogan, "See Something, Hear Something, Say Something".

Before and during the drill we worked on effective communication. During a real active shooting situation, it is imperative to make sure that 911 is called immediately and that specific information is communicated with staff via the intercom system and via emails to account for a system of communication with staff if there is no access to the intercom.

We also spent time talking about individual staff making decisions for the real-life situation. When do you make a decision to lockdown and secure the room or to flee the building? Is there a time to actively cause a distraction of the shooter to cause chaos and to then flight? These were great discussions with staff.

After the drill we debriefed with staff on observations and challenges.

As a staff, we have also been fine tuning our response plans for student death by suicide and for a death that occurs at school.



JENKINS JR/SR HIGH SCHOOL

Home of the Cougars and Raiders

January / February Events Calendar

January 11th – 8th Grade WSU Lab Experience – Healthy Relationships

January 11th – Ski School

January 12th – Priority One

January 13th – Hosa Meeting

January 21st – FFA Trap Shooting Competition in Ritzville

January 24th – Knowledge Bowl Competition in Freeman

January 24th – 7th Grade WSU Health Sciences Field Trip at Mary Walker

January 25th – WSU Family Night

February 3-4 – FFA Floriculture Competition in Yakima

February 7th – Knowledge Bowl Competition at Jenkins

February 13th – 17th – Photography Workshop – Art Creative





Student Support Services

Board Report – January 2023

Quartzite Learning and Open Doors

We spent time discussing the work of the district PLC leadership team and the PLC initiative. We will continue to meet in our PLC teams and partake in larger group discussions surrounding this initiative. We have our second full day of training with our consultant from the National Dropout Prevention Center scheduled for February 3rd. We look forward to this day of continued learning and creating our plan. Teachers are having students complete their winter i-Ready and Map assessments, and then we will be able to start analyzing growth in these areas based on these assessments. Many staff will attend the spring WALA (Washington Association for Learning Alternatives) conference at the end of February. Every year, we look forward to this conference to connect with colleagues and learn more about serving students in alternative learning programs.

Data and Assessment

Students in all schools will be taking with winter round of i-Ready and Map assessments over the next few weeks. We have Map professional learning scheduled for the end of February to learn about the growth reports that teachers will be able to access once students have taken the test twice. We will schedule another i-Ready professional learning session for this spring as well.

Career and Technical Education (CTE)

We have scheduled an advisory meeting for January 18 at 5:30, and teachers are inviting local community members and business owners to attend. We will update the committee on how things are going this year, give a tour of the facilities, and seek feedback for improvement in our programs.

Grants

We have received a \$5000 grant through the Keeping Excellent Special Educators (KESE) project. We will participate in monthly zoom meetings and work on developing a plan for our district on how we will recruit, retain, and support beginning special education teachers. Districts that complete this plan by April 15 will have an opportunity to apply for a competitive grant of \$30,000-\$40,000 to kick-start their plan. We look forward to learning more through this consortium and from other districts to support our staff.

**CHEWELAH SCHOOL DISTRICT NO. 36
FINANCIAL REPORT
2022/2023**

Beginning Cash and Investment Balance:	
240 Treasurer's Balance - September 1, 2022	\$389,501.13
450 Investment Balance - September 1, 2022	\$1,855,168.80
241 Warrants Outstanding - September 1, 2022	(\$371,410.03)
TOTAL CASH AND INVESTMENT BALANCE - September 1, 2022	\$1,873,259.90

December 31, 2022

CASH RECEIPTS FOR THE MONTH:

State Apportionment	\$1,012,368.25
District Deposits	\$14,053.51
Investments Earnings	\$5,057.11
Timber Excise Tax	\$0.00
Federal Forests	\$0.00
Federal In-Lieu-Of Taxes	\$0.00
Local Property Tax	\$7,047.72
Other:	\$0.00
TOTAL RECEIPTS	\$1,038,526.59

EXPENDITURES FOR MONTH:

Accounts Payable	\$178,783.62
Payroll	\$875,996.80
Transfer to Debt Service	\$0.00
Other: Canceled Warrants	\$0.00
Other: ACH Return	\$0.00
TOTAL EXPENDITURES	\$1,054,780.42

MONTHLY INCREASE/(DECREASE) \$ (16,253.83)

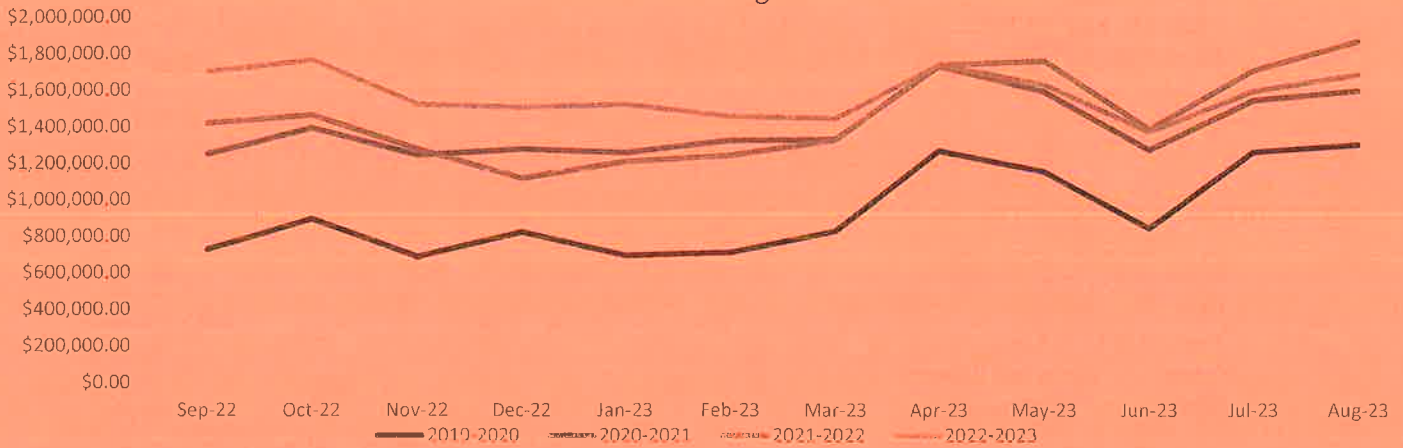
Ending Cash and Investment Balance	
240 Treasurer's Balance	\$361,672.46
450 Investment Balance	\$1,500,434.75
241 Warrants Outstanding	(\$352,208.81)
CASH AND INVESTMENT BALANCE AS PER STEVENS COUNTY TREASURER'S	\$1,509,898.40
UNASSIGNED FUND BALANCE	\$1,017,960.40
Fund Balance Assigned to Other Purposes	\$500,000.00
Total Fund Balance	\$1,517,960.40

CAPITAL PROJECTS FUND CASH & INVESTMENT BALANCE:	<u>\$335,463.38</u>
DEBT SERVICE FUND CASH & INVESTMENT BALANCE:	<u>\$23,167.57</u>
A.S.B. FUND CASH & INVESTMENT BALANCE:	<u>\$88,742.95</u>
TRANSPORTATION VEHICLE FUND CASH & INVESTMENT BALANCE:	<u>\$209,964.18</u>

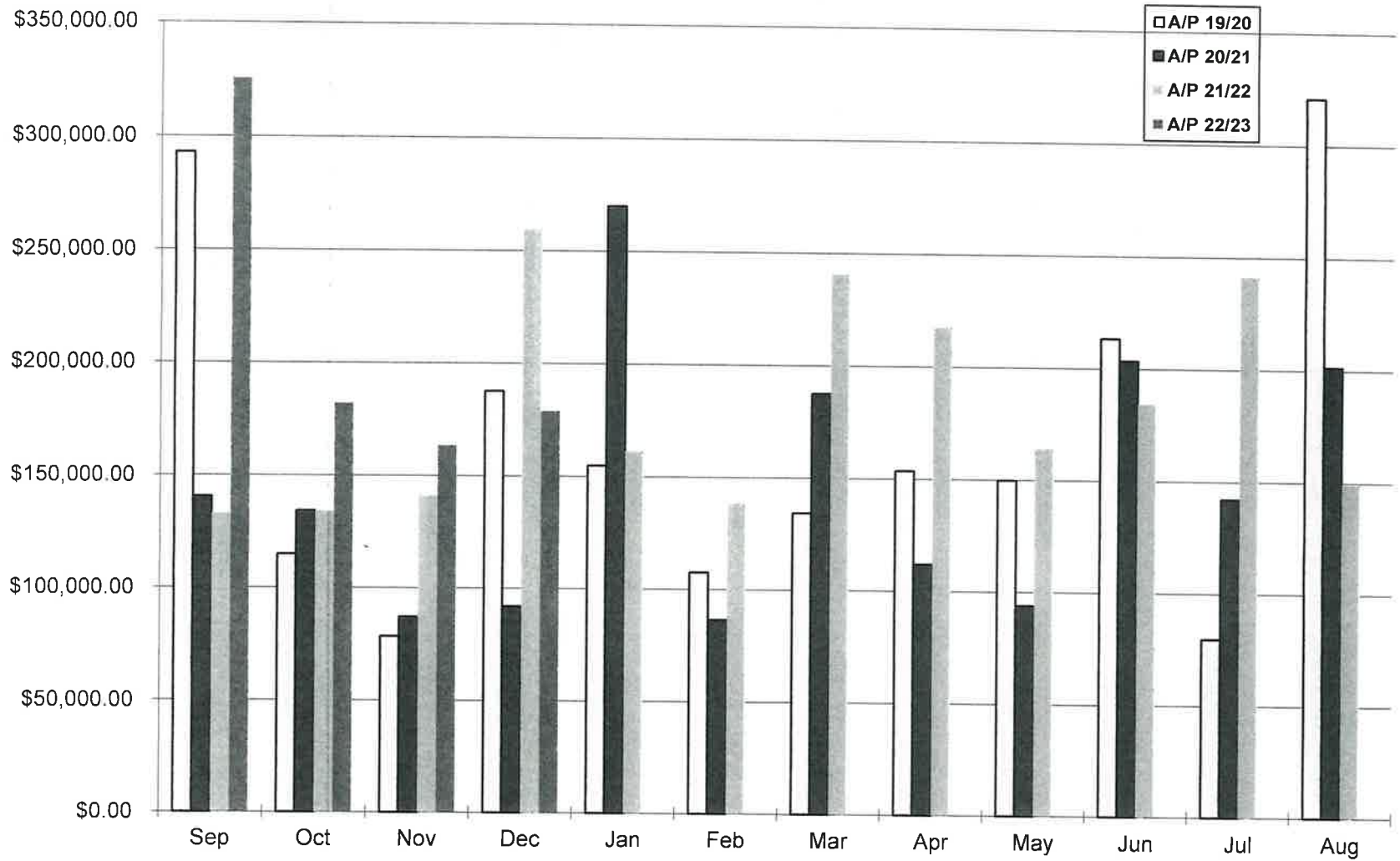
2022-2023 Financial Report
STEVENS COUNTY TREASURER'S ENDING BALANCE

Sep-19	\$729,621.47	Sep-20	\$1,253,770.69	Sep-21	\$1,423,882.95	Sep-22	\$1,707,870.36	
Oct-19	\$897,701.70	Oct-20	\$1,397,150.63	Oct-21	\$1,468,123.60	Oct-22	\$1,769,516.00	
Nov-19	\$690,564.88	Nov-20	\$1,247,908.17	Nov-21	\$1,281,033.93	Nov-22	\$1,526,152.23	
Dec-19	\$825,477.61	Dec-20	\$1,280,897.48	Dec-21	\$1,119,975.26	Dec-22	\$1,509,898.40	
Jan-20	\$696,923.14	Jan-21	\$1,262,436.43	Jan-22	\$1,211,725.08	Jan-23	\$1,525,000.00	Estimate
Feb-20	\$711,933.16	Feb-21	\$1,327,993.02	Feb-22	\$1,243,922.79	Feb-23	\$1,460,000.00	Estimate
Mar-20	\$830,200.17	Mar-21	\$1,335,511.99	Mar-22	\$1,331,851.46	Mar-23	\$1,450,000.00	Estimate
Apr-20	\$1,271,000.43	Apr-21	\$1,737,993.21	Apr-22	\$1,745,961.23	Apr-23	\$1,745,000.00	Estimate
May-20	\$1,156,011.59	May-21	\$1,596,745.55	May-22	\$1,766,334.68	May-23	\$1,635,000.00	Estimate
Jun-20	\$847,502.15	Jun-21	\$1,277,412.71	Jun-22	\$1,392,533.42	Jun-23	\$1,375,000.00	Estimate
Jul-20	\$1,265,319.49	Jul-21	\$1,549,087.60	Jul-22	\$1,712,306.54	Jul-23	\$1,600,000.00	Estimate
Aug-20	\$1,305,233.44	Aug-21	\$1,600,211.65	Aug-22	\$1,873,259.90	Aug-23	\$1,690,000.00	Estimate

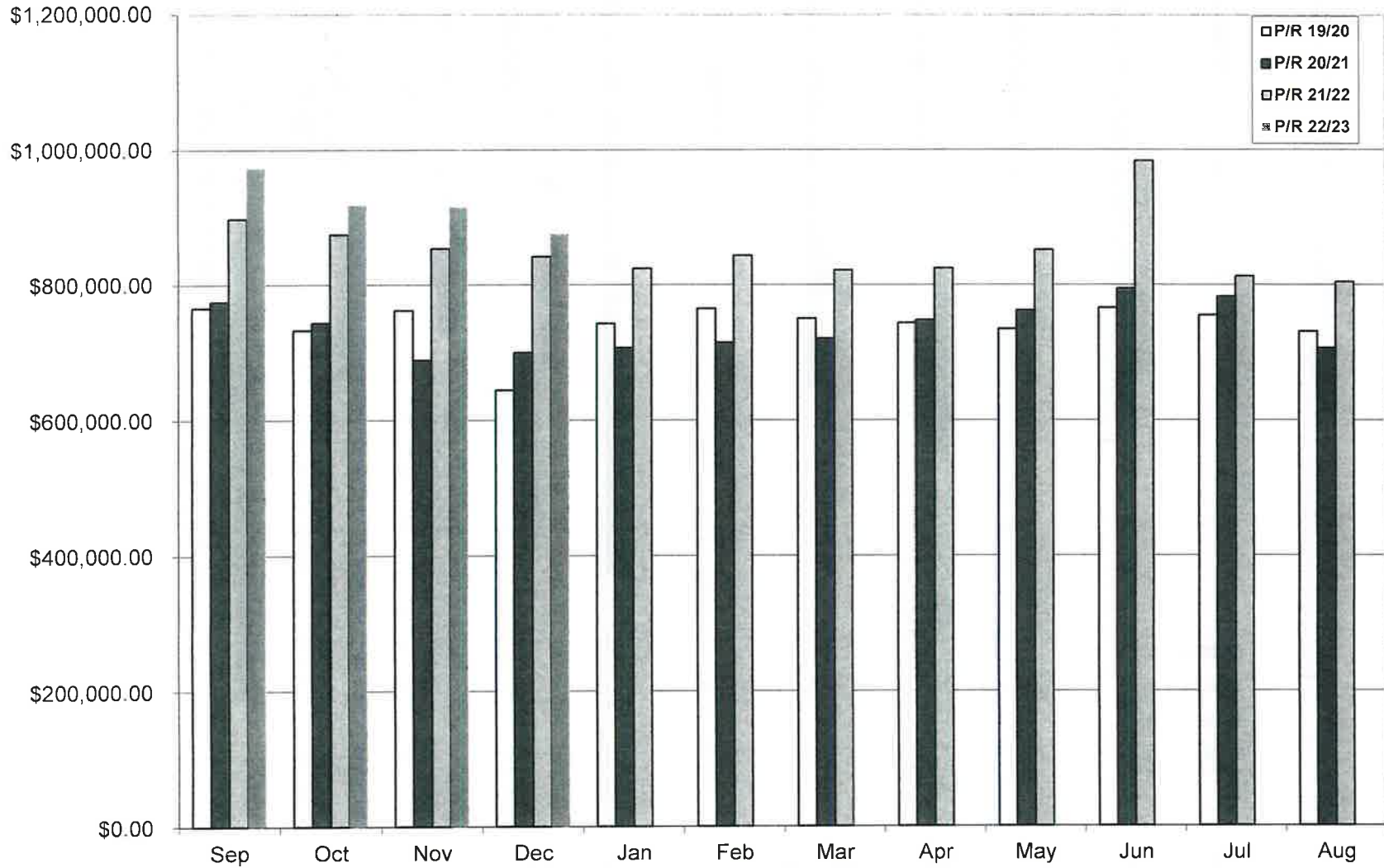
Treasurer's Ending Balance



CHEWELAH SCHOOL DISTRICT NO. 36 - ACCOUNT PAYABLE EXPENDITURES



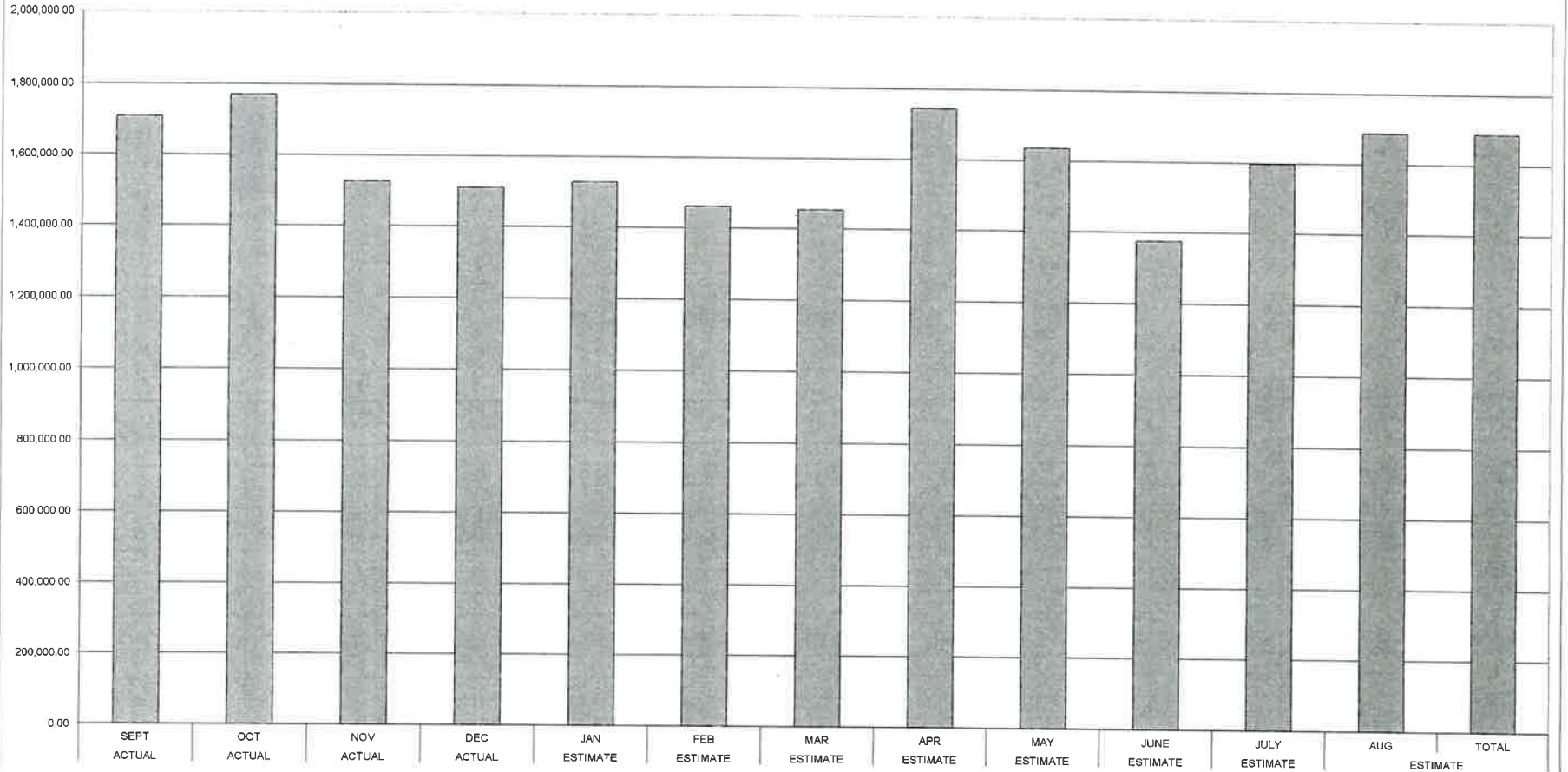
CHEWELAH SCHOOL DISTRICT NO.36 - PAYROLL EXPENDITURES



**CHEWELAH SCHOOL DISTRICT
CASH FLOW 2022-2023**

	ACTUAL SEPT	ACTUAL OCT	ACTUAL NOV	ACTUAL DEC	ESTIMATE JAN	ESTIMATE FEB	ESTIMATE MAR	ESTIMATE APR	ESTIMATE MAY	ESTIMATE JUNE	ESTIMATE JULY	ESTIMATE AUG	TOTAL
BEGINNING CASH BALANCE	1,873,260.00	1,707,870.46	1,769,516.10	1,526,152.33	1,509,898.50	1,527,898.50	1,460,898.50	1,453,898.50	1,743,898.50	1,636,898.50	1,374,898.50	1,597,898.50	1,873,260.00
REVENUE					FTE ADJUST								
	9%	8%	5%	9%	8.5%	9%	9%	9%	5%	6%	12.5%	10%	100%
APPORTIONMENT	989,288.86	909,535.05	769,743.52	1,012,368.25	1,100,000.00	985,000.00	985,000.00	995,000.00	850,000.00	875,000.00	1,300,000.00	1,250,000.00	12,020,935.68
PROPERTY TAXES	50,758.89	245,622.27	56,062.64	7,047.72	5,000.00	10,000.00	150,000.00	350,000.00	105,000.00	5,000.00	5,000.00	5,000.00	994,491.52
LOCAL RECEIPTS	89,632.82	3,359.35	5,669.10	14,053.51	10,000.00	20,000.00	35,000.00	3,000.00	10,000.00	5,000.00	25,000.00	15,000.00	235,714.78
OTHER	3,598.04	4,094.08	4,583.74	5,057.11	3,000.00	13,000.00	3,000.00	22,000.00	3,000.00	3,000.00	3,000.00	15,000.00	82,332.97
	1,133,278.61	1,162,610.75	836,059.00	1,038,526.59	1,118,000.00	1,028,000.00	1,173,000.00	1,370,000.00	968,000.00	888,000.00	1,333,000.00	1,285,000.00	13,333,474.95
EXPENDITURES													
A/P	325,505.00	182,011.08	163,455.96	178,783.62	230,000.00	180,000.00	265,000.00	205,000.00	170,000.00	225,000.00	210,000.00	215,000.00	2,549,755.66
PR	973,163.15	918,954.03	915,966.81	875,996.80	870,000.00	915,000.00	915,000.00	875,000.00	905,000.00	925,000.00	900,000.00	980,000.00	10,969,080.79
TRANSFER													0.00
ENDING CASH BALANCE	1,707,870.46	1,769,516.10	1,526,152.33	1,509,898.50	1,527,898.50	1,460,898.50	1,453,898.50	1,743,898.50	1,636,898.50	1,374,898.50	1,597,898.50	1,687,898.50	1,687,898.50

MONTHLY FUND BALANCE

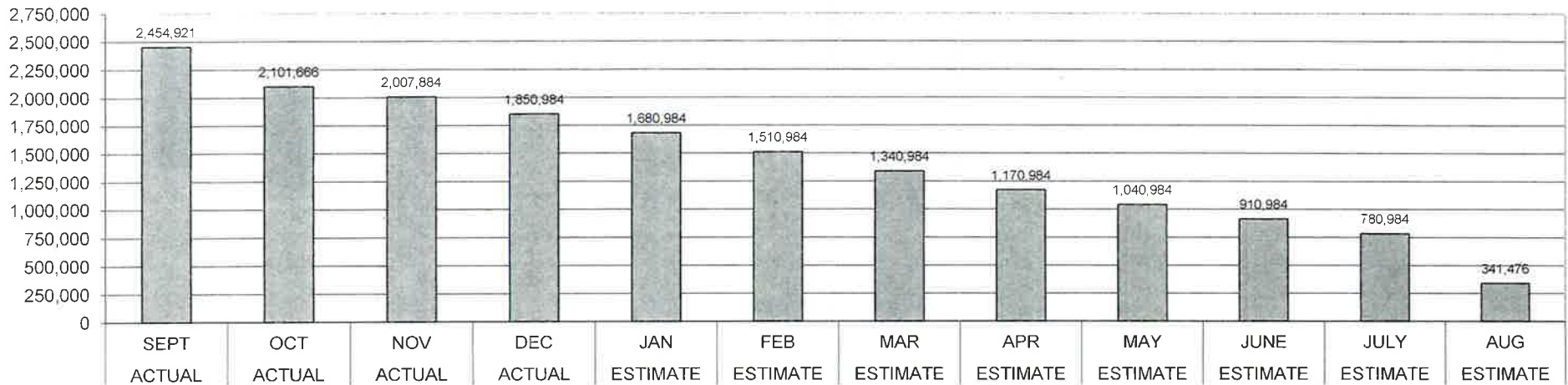


CHEWELAH SCHOOL DISTRICT

BUDGET STATUS 2022-2023

	ACTUAL SEPT	ACTUAL OCT	ACTUAL NOV	ACTUAL DEC	ESTIMATE JAN	ESTIMATE FEB	ESTIMATE MAR	ESTIMATE APR	ESTIMATE MAY	ESTIMATE JUNE	ESTIMATE JULY	ESTIMATE AUG
BUDGET	14,486,610	14,486,610	14,486,610	14,486,610	14,486,610	14,486,610	14,486,610	14,486,610	14,486,610	14,486,610	14,486,610	14,486,610
YTD EXPENDITURES	1,407,064	2,505,539	3,581,841	4,640,134	5,810,134	6,975,134	8,225,134	9,375,134	10,520,134	11,740,134	12,920,134	14,145,134
ENCUMBRANCES	10,624,626	9,879,405	8,896,885	7,995,492	6,995,492	6,000,492	4,920,492	3,940,492	2,925,492	1,835,492	785,492	
BUDGET STATUS	2,454,921	2,101,666	2,007,884	1,850,984	1,680,984	1,510,984	1,340,984	1,170,984	1,040,984	910,984	780,984	341,476
PERCENTAGE OF BUDGET REMIANING	17%	15%	14%	13%	12%	10%	9%	8%	7%	6%	5%	2%

ESTIMATED BUDGET STATUS REPORT



10--General Fund-- FUND BALANCE -- AGENCY ACCOUNTS -- Revised -- BUDGET-STATUS-REPORT
Fiscal Year 2022 (September 1, 2022 - August 31, 2023)

For the CHEWELAH SCHOOL DISTRICT School District for the Month of December, 2022

	ANNUAL	ACTUAL	ACTUAL			
	BUDGET	FOR MONTH	FOR YEAR	ENCUMBRANCES	BALANCE	PERCENT
A. REVENUES/OTHER FIN. SOURCES						
1000 LOCAL TAXES	1,000,000	7,047.72	359,491.52		640,508.48	35.95
2000 LOCAL SUPPORT NONTAX	74,406	5,888.61	22,669.79		51,736.21	30.47
3000 STATE, GENERAL PURPOSE	7,388,261	650,069.41	2,273,107.25		5,115,153.75	30.77
4000 STATE, SPECIAL PURPOSE	2,518,963	196,813.95	679,063.86		1,839,899.14	26.96
5000 FEDERAL, GENERAL PURPOSE	22,000	.00	.00		22,000.00	0.00
6000 FEDERAL, SPECIAL PURPOSE	3,108,468	166,394.75	599,904.96		2,508,563.04	19.30
7000 REVENUES FR OTH SCH DIST	20,000	10,745.19	12,243.93		7,756.07	61.22
8000 OTHER AGENCIES AND ASSOCIATES	0	.00	64,211.00		64,211.00-	0.00
9000 OTHER FINANCING SOURCES	0	.00	.00		.00	0.00
Total REVENUES/OTHER FIN. SOURCES	14,132,098	1,036,959.63	4,010,692.31		10,121,405.69	28.38
B. EXPENDITURES						
00 Regular Instruction	6,288,966	465,811.68	2,125,022.20	3,610,046.84	553,896.96	91.19
10 Federal Stimulus	1,551,029	29,585.11	244,107.23	465,844.23	841,077.54	45.77
20 Special Ed Instruction	1,531,326	172,458.33	562,448.01	952,976.99	15,901.00	98.96
30 Voc. Ed Instruction	625,230	51,890.31	234,500.93	368,963.19	21,765.88	96.52
40 Skills Center Instruction	0	.00	.00	0.00	.00	0.00
50+60 Compensatory Ed Instruct.	1,629,213	101,387.10	398,400.20	765,505.58	465,307.22	71.44
70 Other Instructional Pgms	22,552	1,338.50	7,135.14	10,703.84	4,713.02	79.10
80 Community Services	16,000	.00	.00	0.00	16,000.00	0.00
90 Support Services	2,822,294	235,822.31	1,068,520.15	1,821,451.67	67,677.82-	102.40
Total EXPENDITURES	14,486,610	1,058,293.34	4,640,133.86	7,995,492.34	1,850,983.80	87.22
C. OTHER FIN. USES TRANS. OUT (GL 536)						
	0	.00	.00			
D. OTHER FINANCING USES (GL 535)						
	0	.00	.00			
E. EXCESS OF REVENUES/OTHER FIN.SOURCES OVER(UNDER) EXP/OTH FIN USES (A-B-C-D)						
	354,512-	21,333.71-	629,441.55-		274,929.55-	77.55
F. TOTAL BEGINNING FUND BALANCE						
	1,900,000		2,147,401.95			
G. G/L 898 PRIOR YEAR ADJUSTMENTS(+OR-)						
	XXXXXXXXXX		.00			
H. TOTAL ENDING FUND BALANCE						
	1,545,488		1,517,960.40			
(E+F + OR - G)						

I. ENDING FUND BALANCE ACCOUNTS:

G/L 810 Restricted For Other Items	0	.00
G/L 815 Restrict Unequalized Deduct Rev	0	.00
G/L 821 Restricted for Carryover	22,000	.00
G/L 825 Restricted for Skills Center	0	.00
G/L 828 Restricted for C/O of FS Rev	0	.00
G/L 830 Restricted for Debt Service	0	.00
G/L 835 Restricted For Arbitrage Rebate	0	.00
G/L 840 Nonspnd FB - Invent/Prepd Itms	0	.00
G/L 845 Restricted for Self-Insurance	0	.00
G/L 850 Restricted for Uninsured Risks	0	.00
G/L 870 Committed to Other Purposes	0	.00
G/L 872 Committed to Econmc Stabilizatr	0	.00
G/L 875 Assigned Contingencies	0	.00
G/L 884 Assigned to Other Cap Projects	0	.00
G/L 888 Assigned to Other Purposes	400,000	500,000.00
G/L 890 Unassigned Fund Balance	1,123,488	1,017,960.40
G/L 891 Unassigned Min Fnd Bal Policy	0	.00
<u>TOTAL</u>	1,545,488	1,517,960.40

20--Capital Projects-- FUND BALANCE -- AGENCY ACCOUNTS -- Revised -- BUDGET-STATUS-REPORT
Fiscal Year 2022 (September 1, 2022 - August 31, 2023)

For the CHEWELAH SCHOOL DISTRICT School District for the Month of December, 2022

	ANNUAL BUDGET	ACTUAL FOR MONTH	ACTUAL FOR YEAR	ENCUMBRANCES	BALANCE	PERCENT
A. REVENUES/OTHER FIN. SOURCES						
1000 Local Taxes	425,511	2,831.52	148,720.76		276,790.24	34.95
2000 Local Support Nontax	1,000	908.71	2,802.27		1,802.27-	280.23
3000 State, General Purpose	0	.00	.00		.00	0.00
4000 State, Special Purpose	3,613,000	111,216.98	113,017.15		3,499,982.85	3.13
5000 Federal, General Purpose	5,500	.00	.00		5,500.00	0.00
6000 Federal, Special Purpose	580,000	8,781.90	82,502.67		497,497.33	14.22
7000 Revenues Fr Oth Sch Dist	0	.00	.00		.00	0.00
8000 Other Agencies and Associates	0	.00	.00		.00	0.00
9000 Other Financing Sources	0	.00	.00		.00	0.00
Total REVENUES/OTHER FIN. SOURCES	4,625,011	123,739.11	347,042.85		4,277,968.15	7.50
B. EXPENDITURES						
10 Sites	561,011	2,742.94	78,276.01	171,144.28	311,590.71	44.46
20 Buildings	540,000	.00	.00	28,317.74	511,682.26	5.24
30 Equipment	3,953,000	78,331.54	233,356.89	3,267,965.90	451,677.21	88.57
40 Energy	2,500	.00	.00	0.00	2,500.00	0.00
50 Sales & Lease Expenditure	10,000	.00	3,200.00	0.00	6,800.00	32.00
60 Bond Issuance Expenditure	0	.00	.00	0.00	.00	0.00
90 Debt	0	.00	.00	0.00	.00	0.00
Total EXPENDITURES	5,066,511	81,074.48	314,832.90	3,467,427.92	1,284,250.18	74.65
C. <u>OTHER FIN. USES TRANS. OUT (GL 536)</u>	0	.00	.00			
D. <u>OTHER FINANCING USES (GL 535)</u>	0	.00	.00			
E. <u>EXCESS OF REVENUES/OTHER FIN. SOURCES OVER (UNDER) EXP/OTH FIN USES (A-B-C-D)</u>	441,500-	42,664.63	32,209.95		473,709.95	107.30-
F. <u>TOTAL BEGINNING FUND BALANCE</u>	460,000		300,433.58			
G. <u>G/L 898 PRIOR YEAR ADJUSTMENTS (+OR-)</u>	XXXXXXXX		.00			
H. <u>TOTAL ENDING FUND BALANCE</u> <u>(E+F + OR - G)</u>	18,500		332,643.53			

I. ENDING FUND BALANCE ACCOUNTS:

G/L 810 Restricted For Other Items	0	.00
G/L 825 Restricted for Skills Center	0	.00
G/L 830 Restricted for Debt Service	0	.00
G/L 835 Restricted For Arbitrage Rebate	0	.00
G/L 840 Nonspnd FB - Invent/Prepd Itms	0	.00
G/L 850 Restricted for Uninsured Risks	0	.00
G/L 861 Restricted from Bond Proceeds	0	.00
G/L 862 Committed from Levy Proceeds	13,000	356,449.10
G/L 863 Restricted from State Proceeds	0	24,588.02-
G/L 864 Restricted from Fed Proceeds	0	5,562.79-
G/L 865 Restricted from Other Proceeds	0	.00
G/L 866 Restricted from Impact Proceeds	0	.00
G/L 867 Restricted from Mitigation Fees	0	.00
G/L 869 Restricted fr Undistr Proceeds	0	.00
G/L 870 Committed to Other Purposes	0	.00
G/L 889 Assigned to Fund Purposes	5,500	6,345.24
G/L 890 Unassigned Fund Balance	0	.00
<u>TOTAL</u>	18,500	332,643.53

30--Debt Service Fund-- FUND BALANCE -- AGENCY ACCOUNTS -- Revised -- BUDGET-STATUS-REPORT
Fiscal Year 2022 (September 1, 2022 - August 31, 2023)

For the CHEWELAH SCHOOL DISTRICT School District for the Month of December, 2022

	ANNUAL BUDGET	ACTUAL FOR MONTH	ACTUAL FOR YEAR	ENCUMBRANCES	BALANCE	PERCENT
<u>A. REVENUES/OTHER FIN. SOURCES</u>						
1000 Local Taxes	0	.00	.00		.00	0.00
2000 Local Support Nontax	250	76.59	244.66		5.34	97.86
3000 State, General Purpose	0	.00	.00		.00	0.00
5000 Federal, General Purpose	0	.00	.00		.00	0.00
9000 Other Financing Sources	0	.00	.00		.00	0.00
<u>Total REVENUES/OTHER FIN. SOURCES</u>	250	76.59	244.66		5.34	97.86
<u>B. EXPENDITURES</u>						
Matured Bond Expenditures	0	.00	.00	0.00	.00	0.00
Interest On Bonds	0	.00	.00	0.00	.00	0.00
Interfund Loan Interest	0	.00	.00	0.00	.00	0.00
Bond Transfer Fees	0	.00	.00	0.00	.00	0.00
Arbitrage Rebate	0	.00	.00	0.00	.00	0.00
Underwriter's Fees	0	.00	.00	0.00	.00	0.00
<u>Total EXPENDITURES</u>	0	.00	.00	0.00	.00	0.00
C. <u>OTHER FIN. USES TRANS. OUT (GL 536)</u>	0	.00	.00			
D. <u>OTHER FINANCING USES (GL 535)</u>	0	.00	.00			
E. <u>EXCESS OF REVENUES/OTHER FIN. SOURCES OVER (UNDER) EXPENDITURES (A-B-C-D)</u>	250	76.59	244.66		5.34-	2.14-
F. <u>TOTAL BEGINNING FUND BALANCE</u>	23,000		22,922.91			
G. <u>G/L 898 PRIOR YEAR ADJUSTMENTS (+OR-)</u>	XXXXXXXXX		.00			
H. <u>TOTAL ENDING FUND BALANCE (E+F + OR - G)</u>	23,250		23,167.57			
<u>I. ENDING FUND BALANCE ACCOUNTS:</u>						
G/L 810 Restricted for Other Items	0		.00			
G/L 830 Restricted for Debt Service	23,250		23,167.57			
G/L 835 Restricted For Arbitrage Rebate	0		.00			
G/L 870 Committed to Other Purposes	0		.00			
G/L 889 Assigned to Fund Purposes	0		.00			
G/L 890 Unassigned Fund Balance	0		.00			
<u>TOTAL</u>	23,250		23,167.57			

40--Associated Student Body Fund-- FUND BALANCE -- AGENCY ACCOUNTS -- Revised -- BUDGET-STATUS-REPORT
Fiscal Year 2022 (September 1, 2022 - August 31, 2023)

For the CHEWELAH SCHOOL DISTRICT School District for the Month of December, 2022

	ANNUAL BUDGET	ACTUAL FOR MONTH	ACTUAL FOR YEAR	ENCUMBRANCES	BALANCE	PERCENT
A. REVENUES						
1000 General Student Body	58,200	3,715.05	12,732.44		45,467.56	21.88
2000 Athletics	126,500	4,655.75	30,609.72		95,890.28	24.20
3000 Classes	21,500	.00	.00		21,500.00	0.00
4000 Clubs	50,950	436.78	2,671.78		48,278.22	5.24
6000 Private Moneys	11,600	1,020.00	3,500.00		8,100.00	30.17
<u>Total REVENUES</u>	268,750	9,827.58	49,513.94		219,236.06	18.42
B. EXPENDITURES						
1000 General Student Body	53,500	1,633.17	5,756.53	2,383.40	45,360.07	15.21
2000 Athletics	101,500	2,473.13	24,191.75	3,536.48	73,771.77	27.32
3000 Classes	21,500	.00	.00	0.00	21,500.00	0.00
4000 Clubs	52,150	1,195.63	2,958.20	8,670.00	40,521.80	22.30
6000 Private Moneys	13,600	102.32	405.21	900.00	12,294.79	9.60
<u>Total EXPENDITURES</u>	242,250	5,404.25	33,311.69	15,489.88	193,448.43	20.15
C. EXCESS OF REVENUES						
<u>OVER (UNDER) EXPENDITURES (A-B)</u>	26,500	4,423.33	16,202.25		10,297.75-	38.86-
D. TOTAL BEGINNING FUND BALANCE						
	95,000		82,040.70			
E. G/L 898 PRIOR YEAR ADJUSTMENTS (+OR-)						
			.00			
F. TOTAL ENDING FUND BALANCE						
<u>C+D + OR - E)</u>	121,500		98,242.95			
G. ENDING FUND BALANCE ACCOUNTS:						
G/L 810 Restricted for Other Items	0		.00			
G/L 819 Restricted for Fund Purposes	121,500		98,242.95			
G/L 840 Nonspnd FB - Invent/Prepd Itms	0		.00			
G/L 850 Restricted for Uninsured Risks	0		.00			
G/L 870 Committed to Other Purposes	0		.00			
G/L 889 Assigned to Fund Purposes	0		.00			
G/L 890 Unassigned Fund Balance	0		.00			
<u>TOTAL</u>	121,500		98,242.95			

90--Transportation Vehicle Fund-- FUND BALANCE -- AGENCY ACCOUNTS -- Revised -- BUDGET-STATUS-REPORT
Fiscal Year 2022 (September 1, 2022 - August 31, 2023)

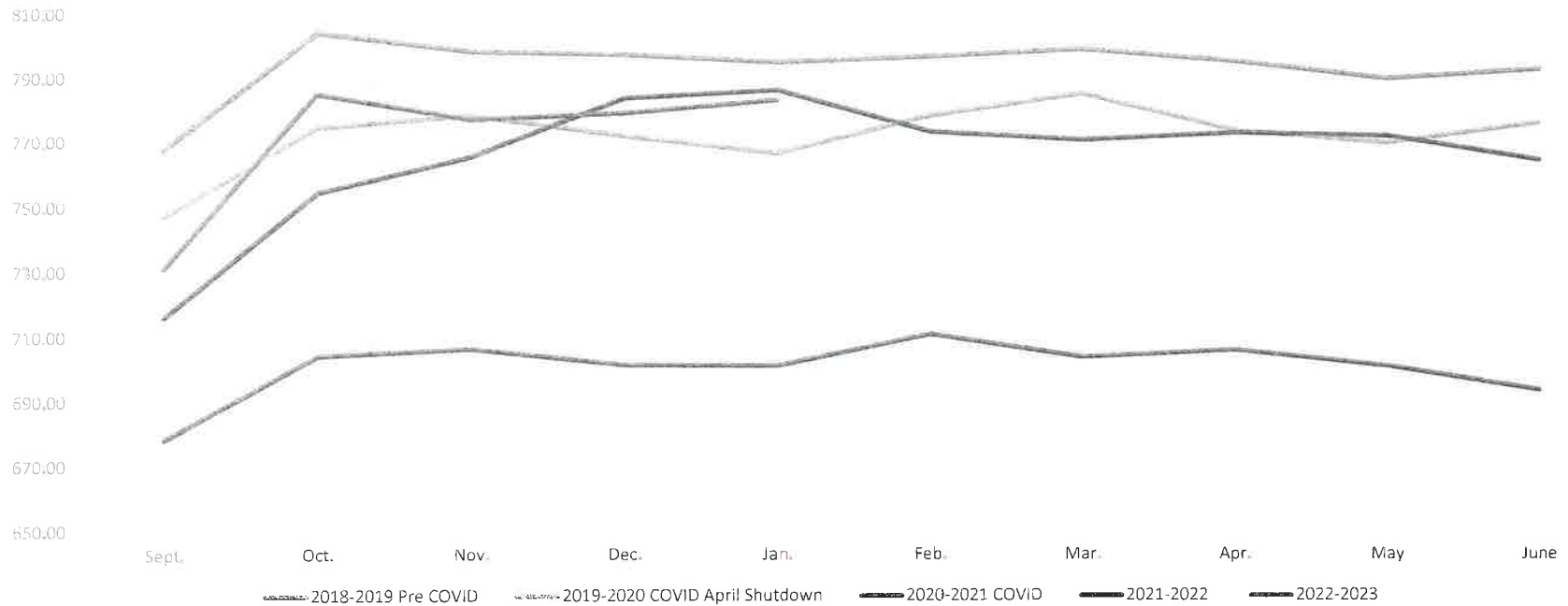
For the CHEWELAH SCHOOL DISTRICT School District for the Month of December, 2022

	ANNUAL BUDGET	ACTUAL FOR MONTH	ACTUAL FOR YEAR	ENCUMBRANCES	BALANCE	PERCENT
<u>A. REVENUES/OTHER FIN. SOURCES</u>						
1000 Local Taxes	0	.00	.00		.00	0.00
2000 Local Nontax	1,500	694.15	2,217.69		717.69-	147.85
3000 State, General Purpose	0	.00	.00		.00	0.00
4000 State, Special Purpose	155,000	.00	.00		155,000.00	0.00
5000 Federal, General Purpose	0	.00	.00		.00	0.00
6000 Federal, Special Purpose	0	.00	.00		.00	0.00
8000 Other Agencies and Associates	0	.00	.00		.00	0.00
9000 Other Financing Sources	2,000	.00	.00		2,000.00	0.00
A. <u>TOTAL REV/OTHER FIN.SRCS (LESS TRANS)</u>	158,500	694.15	2,217.69		156,282.31	1.40
B. <u>9900 TRANSFERS IN FROM GF</u>	0	.00	.00		.00	0.00
C. <u>Total REV./OTHER FIN. SOURCES</u>	158,500	694.15	2,217.69		156,282.31	1.40
<u>D. EXPENDITURES</u>						
Type 30 Equipment	366,500	.00	.00	280,052.07	86,447.93	76.41
Type 60 Bond Levy Issuance	0	.00	.00	0.00	.00	0.00
Type 90 Debt	0	.00	.00	0.00	.00	0.00
<u>Total EXPENDITURES</u>	366,500	.00	.00	280,052.07	86,447.93	76.41
E. <u>OTHER FIN. USES TRANS. OUT (GL 536)</u>	0	.00	.00			
F. <u>OTHER FINANCING USES (GL 535)</u>	0	.00	.00			
G. <u>EXCESS OF REVENUES/OTHER FIN SOURCES OVER (UNDER) EXP/OTH FIN USES (C-D-E-F)</u>	208,000-	694.15	2,217.69		210,217.69	101.07-
H. <u>TOTAL BEGINNING FUND BALANCE</u>	208,000		207,746.49			
I. <u>G/L 898 PRIOR YEAR ADJUSTMENTS (+OR-)</u>	XXXXXXXX		.00			
J. <u>TOTAL ENDING FUND BALANCE (G+H + OR - I)</u>	0		209,964.18			
<u>K. ENDING FUND BALANCE ACCOUNTS:</u>						
G/L 810 Restricted For Other Items	0		.00			
G/L 819 Restricted for Fund Purposes	0		209,964.18			
G/L 830 Restricted for Debt Service	0		.00			
G/L 835 Restrictd For Arbitrage Rebate	0		.00			
G/L 850 Restricted for Uninsured Risks	0		.00			
G/L 889 Assigned to Fund Purposes	0		.00			
G/L 890 Unassigned Fund Balance	0		.00			
<u>TOTAL</u>	0		209,964.18			

Enrollment Trends

Fiscal Year	Sept.	Oct.	Nov.	Dec.	Jan.	Feb.	Mar.	Apr.	May	June	Average Budget	
2017-2018 Pre COVID	744.90	772.43	772.60	783.30	791.17	779.39	780.32	774.79	775.57	769.83	776.34	763.00
2018-2019 Pre COVID	767.83	804.02	798.32	797.29	794.82	796.63	798.88	795.20	789.87	792.87	796.27	730.00
2019-2020 COVID April Shutdown	747.20	774.58	778.55	771.85	766.47	778.22	785.22	773.69	769.81	776.23	772.18	786.00
2020-2021 COVID	678.29	704.06	706.24	701.24	700.94	710.74	703.60	705.88	700.88	693.54	700.54	757.50
2021-2022	716.23	754.51	765.51	783.68	786.25	773.07	770.57	772.90	771.97	764.63	765.93	740.00
2022-2023	731.10	785.15	777.15	779.15	783.16						771.14	763.00

Enrollment Trends



2022-2023 CEP Meal Recap											
Operating Days	24	21	15	12	20	19	22	13	22	7	175
Lunch											
Location	Sep-22	Oct-22	Nov-22	Dec-22	Jan-23	Feb-23	Mar-23	Apr-23	May-23	Jun-23	Totals
GESS	4831	4760	3301	2394							
JJSHS	2346	2243	1525	1144							
Quartzite	186	247	195	109							
Open Doors	4	4	2	4							
Totals	7367	7254	5023	3651	0	0	0	0	0	0	23295
Breakfast											
Location	Sep-22	Oct-22	Nov-22	Dec-22	Jan-23	Feb-23	Mar-23	Apr-23	May-23	Jun-23	Totals
GESS	2165	2368	1621	1109							
JJSHS	706	851	706	498							
Quartzite	137	154	131	72							
Open Doors	8	8	12	4							
Totals	3016	3381	2470	1683	0	0	0	0	0	0	10550
Gess Free Lunch	1727	1889	1891	1422							
Gess @ 79.79%	1727	1889	1293	885	0	0	0	0	0	0	
JJSHS Free Lunch	563	679	809	583							
JJSHS @ 79.79%	563	679	563	397	0	0	0	0	0	0	
QL Free Lunch	109	123	144	85							
QL @ 79.79%	109	123	105	57	0	0	0	0	0	0	
OD Free Lunch	6	6	2	4							
OD @ 79.79%	6	6	10	3	0	0	0	0	0	0	
Total Free	2405	2697	1971	1343	0	0	0	0	0	0	8415.6787
LunchOp	\$ 32,046.45	\$ 31,554.90	\$ 21,850.05	\$ 15,881.85	\$ -	\$ -	\$ -	\$ -	\$ -	\$ -	\$ 101,333.25
Lunch Meal Pattern	\$ 589.36	\$ 580.32	\$ 401.84	\$ 292.08	\$ -	\$ -	\$ -	\$ -	\$ -	\$ -	\$ 1,863.60
Lunch TTL	\$ 32,635.81	\$ 32,135.22	\$ 22,251.89	\$ 16,173.93	\$ -	\$ -	\$ -	\$ -	\$ -	\$ -	\$ 103,196.85
BreakfastOP	\$ 8,052.72	\$ 9,027.27	\$ 6,594.90	\$ 4,493.61	\$ -	\$ -	\$ -	\$ -	\$ -	\$ -	\$ 28,168.50
Breakfast Meal Assistance	\$ 120.25	\$ 134.85	\$ 98.54	\$ 67.14	\$ -	\$ -	\$ -	\$ -	\$ -	\$ -	\$ 420.78
Breakfast TTL	\$ 8,172.97	\$ 9,162.12	\$ 6,693.44	\$ 4,560.75	\$ -	\$ -	\$ -	\$ -	\$ -	\$ -	\$ 28,589.28
Totals	\$ 40,808.78	\$ 41,297.34	\$ 28,945.33	\$ 20,734.68	\$ -	\$ -	\$ -	\$ -	\$ -	\$ -	\$ 131,786.13
Adult Lunch GESS	32	39	24	27							\$ 131,786.13
Adult Breakfast GESS	0	1	0	0							122.00
Paid GESS	\$ 172.00	\$ 227.90	\$ 137.80	\$ 141.00							\$ 678.70
Adult Lunch JJSHS	22	14	14	9							59.00
Adult Breakfast JJSHS	3	3	0	0							
Paid JJSHS	\$ 125.00	\$ 81.50	\$ 71.50	\$ 45.00							\$ 323.00
Adult Lunch QL	0	0	1	0							1.00
Adult Breakfast QL	0	0	0	0							
Paid QL	\$ -	\$ 5.00	\$ 5.00	\$ -							\$ 10.00
Adult Lunch OD	0	0	0	0							\$ -
Adult Breakfast OD	0	0	0	0							\$ -
Paid OD	\$ -	\$ -	\$ -	\$ -							\$ -
Total Meals	57	57	39	36	0	0	0	0	0	0	189.00
Total Paid	\$ 297.00	\$ 314.40	\$ 214.30	\$ 186.00	\$ -	\$ -	\$ -	\$ -	\$ -	\$ -	\$ 1,011.70
Average Daily	\$ 1,700.37	\$ 1,966.54	\$ 1,929.69	\$ 1,727.89	\$ -	\$ -	\$ -	\$ -	\$ -	\$ -	\$ 624.90
Actual Claim	\$ 40,805.50	\$ 41,294.06	\$ 28,940.42	\$ 20,733.00							
Offage	\$ 3.28	\$ 3.28	\$ 4.91	\$ 1.68							
OD Meals @.41 less (severe r	\$ 3.28	\$ 3.28	\$ 4.92	\$ 1.64							

**CHEWELAH SCHOOL DISTRICT
FOOD SERVICE RECAP December 2023**

ACCOUNT NAME	2018-2019 ACTUAL	2019-2020 ACTUAL	2020-2021 ACTUAL	2021-2022 ACTUAL	2022-2023 Budget	2022-2023 Dec 20022
REVENUE:						
9800 22 0000 110 LOCAL GESS	\$ 32,771.67	\$ 22,292.05	\$ 376.45	\$ 882.40	\$ 1,000.00	\$ 310.30
9800 22 0000 430 LOCAL JHS	\$ 18,011.82	\$ 14,423.85	\$ 583.07	\$ 1,494.95	\$ 1,200.00	\$ 350.00
9801 41 0000 000 SUMMER		\$ 10,934.50	\$ -	\$ -	\$ -	\$ -
9804 41 0000 000 BREAKFAST	\$ 4,411.09	\$ 3,235.76	\$ -	\$ -	\$ -	\$ 353.65
9805 41 0000 000 STATE SUMMER FOOD			\$ 5,004.15	\$ 6,001.70	\$ 3,000.00	\$ -
9806 41 0000 000 STATE CEP COPAY BKFST					\$ -	\$ 3,890.52
9807 41 0000 000 STATE CEP COPAY LUNCH					\$ -	\$ 14,129.64
9872 41 0000 000 REDUCED LUNCH	\$ 890.00	\$ 5,014.58	\$ -	\$ -	\$ -	\$ -
9872 43 0000 000 K-3 LUNCHES	\$ -	\$ -	\$ -	\$ -	\$ -	\$ -
8901 61 0000...1555 1 COVID MEALS		\$ 193,625.24	\$ -	\$ -	\$ -	\$ -
9800 61 0000 000 LUNCH REIMBURSE	\$ 144,201.23	\$ 101,542.17	\$ 234,013.43	\$ -	\$ 185,000.00	\$ 72,893.28
9803 61 0000 000 SEAMLESS SUMMER LUNCH				\$ 234,764.61	\$ -	\$ -
9803 61 0000 000..4095 SEAMLESS SUMMER BKFST	\$ 44,546.15	\$ 31,373.14	\$ -	\$ 48,731.67	\$ -	\$ -
9804 61 0000 000 SCHOOL FOOD SERV-BKFST					\$ 60,000.00	\$ 19,772.89
9810 61 0000 000 PEBT Admin Funds				\$ 614.00	\$ -	\$ -
9811 61 0000 000 FS SUPPLY CHAIN ASSISTANCE					\$ 5,000.00	\$ 17,176.89
9858 61 0000 000 MEALS FOR KIDS	\$ 652.41	\$ -	\$ -	\$ 2,205.80	\$ -	\$ -
9800 69 0000 000 COMMODITIES	\$ 23,781.83	\$ 22,223.41	\$ 13,650.28	\$ 25,758.45	\$ 25,000.00	\$ -
TOTAL REVENUE	\$ 269,266.20	\$ 404,664.70	\$ 253,627.38	\$ 320,453.58	\$ 280,200.00	\$ 128,877.17
EXPENDITURES:						
9800 41 XXXX SUPERVISOR	\$ 11,426.28	\$ 15,419.40	\$ 18,546.62	\$ 19,432.28	\$ 19,238.95	\$ 5,006.50
9800 42 5000 FOOD	\$ 94,633.97	\$ 135,944.05	\$ 78,725.93	\$ 89,612.24	\$ 115,000.00	\$ 50,910.88
9800 43 5000 COMMODITIES	\$ 23,781.83	\$ 22,223.41	\$ 13,650.28	\$ 25,758.45	\$ 25,000.00	\$ -
9800 44 XXXX OPERATING EXP	\$ 176,492.71	\$ 186,923.32	\$ 138,609.30	\$ 173,268.18	\$ 197,017.90	\$ 63,777.72
9801 42 XXXX SUMMER FOOD				\$ -	\$ 6,837.35	\$ -
9811 42 5000 FOOD SUPPLY CHAIN ASST					\$ 5,000.00	\$ 13,057.22
9858 44 XXXX MEALS FOR KIDS	\$ 652.41	\$ -	\$ -	\$ 2,205.80	\$ -	\$ -
TOTAL EXPENDITURES	\$ 306,987.20	\$ 360,510.18	\$ 249,532.13	\$ 310,276.95	\$ 368,094.20	\$ 132,752.32
TOTAL NET REVENUE (EXPENDITURE)	\$ (37,721.00)	\$ 44,154.52	\$ 4,095.25	\$ 10,176.63	\$ (87,894.20)	\$ (3,875.15)
If revenue this amount is indirects						
8901 61 0000 000 SUMMER REVENUE	\$ 7,955.21	\$ 10,934.50	\$ -	\$ 3,161.95	\$ 12,000.00	\$ -
8901 91 0000 SUMMER EXPENDITURES	\$ 7,531.51	\$ 10,726.10	\$ -	\$ 2,532.25	\$ 12,000.00	\$ -
NET SUMMER REVENUE (EXPENDITURE)	\$ 423.70	\$ 208.34	\$ -	\$ 629.70	\$ -	\$ -
					Net Annualized Revenue (Expenditure)	\$ 9,854.08

**Chewelah School District
Fund Balance Projection (Apportionment Based-Budget)**

ENROLLMENT REVENUE	SY 2022-23	Original Budget													
		763	APPORTIONMENT												
		763	731.1	785.15	777.15	779.15	783.16	0	0	0	0	0	0		
Original Budget	APPORTIONMENT	September	October	November	December	January	February	March	April	May	June	July	August		
Annual Amt.	Current	September 9.5% Actual	October 8.5% Actual	November 5.5% Actual	December 9.5% Actual	January 8.5% estimate	February 9.5% estimate	March 9.5% estimate	April 9.5% estimate	May 5.0% estimate	June 6% estimate	July 12.5% estimate	August 10% estimate		
3100 Regular Apportionment	6,979,440.67	6,979,463.51	828,151.72	558,357.08	348,973.17	628,151.72	593,254.40	628,151.72	628,151.72	348,973.18	418,767.81	872,432.94	697,946.35		
3100-06 College in HS	25,000.00		0.00	0.00	0.00	0.00	0.00	0.00	0.00	0.00	0.00	0.00	0.00		
3121 Apport Spec Ed	207,723.50	207,781.25	18,700.31	16,622.50	10,389.07	18,700.31	17,661.41	18,700.31	18,700.31	10,389.06	12,466.88	25,972.66	20,778.12		
3300 LEA (Sept through Dec)	115,872.00	115,872.00	0.00	14,482.72	27,361.27	3,217.38	0.00	0.00	0.00	0.00	0.00	35,405.32	35,405.32		
3300 LEA (Jan through Aug)	60,224.00	243,002.00	0.00	0.00	0.09	0.00	0.00	0.00	0.00	0.00	101,258.93	77,614.84	28,686.39		
4100-01 General Fund Projects (Para PD)	25,000.00		0.00	0.00	0.00	0.00	0.00	0.00	0.00	0.00	0.00	0.00	0.00		
4121 Special Ed	995,411.68	995,688.97	89,612.01	79,655.11	49,784.45	89,612.01	84,633.56	89,612.01	89,612.01	49,784.45	59,741.34	124,461.12	99,568.90		
4155 Learning Assist	526,038.88	529,866.50	47,687.99	42,389.32	26,493.32	47,687.99	45,038.65	47,687.99	47,687.99	26,493.33	31,791.99	66,233.31	52,986.65		
4158-03 National Board Certs	53,104.52		0.00	0.00	0.00	0.00	0.00	0.00	0.00	0.00	0.00	0.00	0.00		
4158-04 Grant	63,000.00	109,970.00	0.00	1,377.21	1,900.54	1,637.24	13,131.88	13,131.88	13,131.88	13,131.88	13,131.88	13,131.88	13,131.88		
4158-07 Grant	236,000.00	193,500.00	0.00	0.00	0.00	0.00	24,187.50	24,187.50	24,187.50	24,187.50	24,187.50	24,187.50	24,187.50		
4174 Highly Capable	22,758.81	22,758.81	2,048.29	1,820.71	1,137.94	2,048.29	1,934.50	2,048.29	2,048.29	2,048.29	2,048.29	2,048.29	2,048.29		
4196 Food Serv	3,000.00	65,000.00	0.00	6,746.14	6,837.27	4,790.40	5,828.27	5,828.27	5,828.27	5,828.27	5,828.27	5,828.27	5,828.27		
4199 Transportation	569,249.00	567,089.12	51,038.02	45,367.13	28,354.46	51,038.02	48,202.68	51,038.02	51,038.02	28,354.46	34,025.35	70,886.14	56,708.91		
4300 Other State Agencies	19,898.56	19,898.56	0.00	0.00	0.00	0.00	1,691.38	1,790.87	1,790.87	994.93	1,193.91	2,487.32	8,158.41		
4358 Special and Pilot Programs	5,500.00	4,000.00	0.00	0.00	0.00	0.00	340.00	360.00	360.00	200.00	240.00	500.00	1,640.00		
611133 SLFRF LEA Stabilization	98,605.00	98,605.00	0.00	0.00	0.00	0.00	0.00	0.00	0.00	0.00	0.00	0.00	0.00		
6112 ESSER II	180,000.00	149,748.71	0.00	22,417.39	26,786.56	23,533.75	20,000.00	20,000.00	20,000.00	17,011.01	0.00	0.00	98,605.00		
611294 ESSER-ITK Bal Calendar, 9th Success		179,500.00	0.00	0.00	1,404.06	2,158.54	21,992.18	21,992.18	21,992.18	21,992.18	21,992.18	21,992.18	21,992.18		
6113 ESSER III	1,485,950.00	1,469,926.36	0.00	47,925.31	41,844.37	27,661.63	30,000.00	38,380.95	45,000.00	47,988.99	65,000.00	65,000.00	65,000.00		
6113 ESSER III Homeless	7,500.00	7,798.23	0.00	0.00	207.40	671.13	864.96	864.96	864.96	864.96	864.96	864.96	864.96		
6114 ESSER III-Learning Loss	105,000.00	70,577.10	0.00	32,666.02	10,489.92	11,282.11	9,500.00	6,639.05	0.00	0.00	0.00	0.00	0.00		
6119 DOH Learn to Return		32,669.00	0.00	0.00	1,358.18	6,214.88	3,136.99	3,136.99	3,136.99	3,136.99	3,136.99	3,136.99	3,136.99		
6123 Fed Special ED-23	13,500.00	10,774.00	0.00	0.00	0.00	0.00	1,346.75	1,346.75	1,346.75	1,346.75	1,346.75	1,346.75	1,346.75		
6124 Fed Special ED-24	190,516.00	190,516.00	0.00	0.00	0.00	0.00	1,346.75	1,346.75	1,346.75	1,346.75	1,346.75	1,346.75	1,346.75		
6138 Fed Vocational-38	14,000.00	32,108.00	0.00	7,490.51	1,552.33	1,296.26	2,721.11	2,721.11	2,721.11	2,721.11	2,721.11	2,721.11	2,721.11		
6151 Fed Title I-51	522,876.00	520,683.35	0.00	0.00	95,871.30	38,089.63	48,340.30	48,340.30	48,340.30	48,340.30	48,340.30	48,340.30	48,340.30		
6152 Fed Title II -52 & KESE SPED	188,521.00	174,049.54	0.00	0.00	22,922.75	13,684.44	17,180.29	17,180.29	17,180.29	17,180.29	17,180.29	17,180.29	17,180.29		
6189 Other Community Services	12,000.00	12,000.00	0.00	0.00	0.00	0.00	0.00	0.00	0.00	0.00	0.00	0.00	0.00		
6198 Food Service	245,000.00	280,000.00	0.00	34,059.36	34,456.79	24,150.02	23,416.73	23,416.73	23,416.73	23,416.73	23,416.73	23,416.73	23,416.73		
619802 Food-Federal-Safe Schools Grant			0.00	0.00	0.00	0.00	0.00	0.00	0.00	0.00	0.00	0.00	0.00		
6198-11 School Food-Fed Supply Chain Assist	5,000.00	17,176.89	17,176.89	0.00	0.00	0.00	0.00	0.00	0.00	0.00	0.00	0.00	0.00		
Apportionment Totals-	Balance to Apportionment report	12,975,689.82	13,300,022.90	854,415.23	911,376.51	769,743.52	1,012,368.25	1,032,147.83	1,084,280.56	1,084,280.56	1,185,539.50	788,833.53	823,239.62	1,474,801.40	1,357,693.28
1100 Taxes collected	Line 020 F-197	974,092	974,092	50,758.89	245,622.27	56,062.64	7,047.72	76,825.06	76,825.06	76,825.06	76,825.06	76,825.06	76,825.06		
1500 Timber Excise	Line 035 F-197	25,908	25,908	0.00	0.00	0.00	0.00	0.00	12,954.00	0.00	0.00	0.00	12,954.00		
2300 Interest	Line 002 F-197	3,000	55,000	3,598.04	4,094.08	4,583.74	5,057.11	4,708.38	4,708.38	4,708.38	4,708.38	4,708.38	4,708.38		
2000 Local Deposits	Line 001 F-197	71,406	20,000	2,656.51	596.50	1,252.31	831.50	1,832.90	1,832.90	1,832.90	1,832.90	1,832.90	1,832.90		
5500 Federal Forests		22,000	22,000	0.00	0.00	0.00	0.00	0.00	1,832.90	1,832.90	1,832.90	1,832.90	1,832.90		
6321 Medicaid		15,000	15,000	0.00	1,374.08	1,888.62	909.86	1,353.43	1,353.43	1,353.43	1,353.43	1,353.43	1,353.43		
6998 Commodities		25,000	25,000	0.00	0.00	0.00	0.00	0.00	0.00	0.00	0.00	0.00	0.00		
7000 Other SD		20,000	25,000	0.00	0.00	1,498.74	10,745.19	0.00	0.00	0.00	0.00	0.00	25,000.00		
8000 Other deposits:	Alcoa Grant		64,211	64,211.00	0.00	0.00	0.00	0.00	0.00	0.00	12,756.07	0.00	0.00		
Total Revenues	Balance to Budget Status Report	14,132,096	14,526,234	975,639.67	1,163,063.44	835,029.57	1,036,959.63	1,116,867.60	1,181,954.33	1,169,000.33	1,282,259.26	873,553.30	920,715.45	1,559,521.17	1,480,367.04
Expenditures															
		Annual Amt.	Current Estimate	September	October	November	December	January	February	March	April	May	June	July	August
Payroll - Certificated	Object 2	5,424,998	4,951,318	495,503.48	433,947.14	441,562.64	414,551.58	395,719.09	395,719.09	395,719.09	395,719.09	395,719.09	395,719.09	395,719.09	
Payroll - Classified	Object 3	2,576,301	2,158,870	195,326.78	205,830.91	203,790.84	200,624.12	169,162.23	169,162.23	169,162.23	169,162.23	169,162.23	169,162.23	169,162.23	
Benefits	Object 4	3,370,774	3,199,826	260,509.41	278,047.98	269,522.33	265,270.63	265,809.50	265,809.50	265,809.50	265,809.50	265,809.50	265,809.50	265,809.50	
Substitute & Timesheet Estimate			650,000					80,000.00	80,000.00	80,000.00	80,000.00	80,000.00	80,000.00	80,000.00	
Additional PO Estimate			570,000					71,250.00	71,250.00	71,250.00	71,250.00	71,250.00	71,250.00	71,250.00	
Accounts Payable	Objects 5 through 9	3,114,529	2,168,711	455,724.05	180,649.27	161,425.69	177,847.01	149,133.18	149,133.18	149,133.18	149,133.18	149,133.18	149,133.18	149,133.18	
Other cash decreases	per county			0.00	0.00	0.00	0.00	0.00	0.00	0.00	0.00	0.00	0.00	0.00	
Total Expenditures	Balance to Budget Status Report	14,486,600	13,698,726	1,407,063.72	1,098,475.30	1,076,301.50	1,058,293.34	1,131,074.00	1,131,074.00	1,131,074.00	1,126,074.00	1,131,074.00	1,131,074.00	1,136,074.00	1,141,074.00
Beginning Fund Balance		2,145,315	2,147,402	2,147,401.95	1,715,977.90	1,780,566.04	1,539,294.11	1,017,960.40	1,003,754.00	1,054,634.34	1,092,560.67	1,258,745.94	1,001,225.24	790,866.70	1,214,314
Plus Revenue		14,132,096	14,526,234	975,640	1,163,063	835,030	1,036,960	1,116,868	1,181,954	1,169,000	1,292,259	873,553	920,715	1,559,521	1,480,367
Minus Expenditures		(14,486,600)	(13,698,726)	(1,407,064)	(1,098,475)	(1,076,302)	(1,058,293)	(1,131,074)	(1,131,074)	(1,131,074)	(1,126,074)	(1,131,074)	(1,131,074)	(1,136,074)	(1,141,074)
Ristricted Plus or Minus	Carryover & Inventory Assignment by Superintendent Unassigned Fund Balance	\$(500,000.00)	\$(500,000.00)	\$-	\$-	\$-	\$(500,000.00)	\$-	\$-	\$-	\$-	\$-	\$(1,131,074)	\$-	\$(500,000.00)
Ending/Projected Fund Balance	Balance to Budget Status Report	1,290,811	2,474,910	1,715,978	1,780,566	1,539,294	1,517,960	1,003,754	1,054,634	1,092,561	1,258,746	1,001,225	790,867	1,214,314	1,053,607

The following vouchers, as audited and certified by the Auditing Officer as required by RCW 42.24.080, and those expense reimbursement claims certified as required by RCW 42.24.090, are approved for payment. Those payments have been recorded on this listing which has been made available to the board.

As of January 18, 2023, the board, by a _____ vote, approves payments, totaling \$65,822.52. The payments are further identified in this document.

Total by Payment Type for Cash Account, County Treasurer Warrants:

Warrant Numbers 122339 through 122368, totaling \$65,822.52

Secretary _____ Board Member _____
 Board Member _____ Board Member _____
 Board Member _____ Board Member _____

Check Nbr	Vendor Name	Check Date	Invoice Number	Invoice Desc	PO Number	Invoice Amount	Check Amount
122339	AMAZON	12/29/2022	1CXW-364Q-7LLX	Interactive Science K TE, Building writers, Our Town, dividers, pens, Deco, Reynolds wrap	1400007958	225.09	797.37
10 E 530 0200 33 5640 5400 0000 0000 0				General Fund/EXPENDITURES/ALTERNATIVE BASIC ED		154.42	
10 E 530 0200 27 5610 5400 1740 0000 1				General Fund/EXPENDITURES/ALTERNATIVE BASIC ED		70.67	
			1MP1-JPGY-Q6PT	Azzsy Case for iPad 9th generation shockproof case-SPED ARP Grant	1100007888	173.70	
10 E 530 2300 27 5650 1100 0000 0000 0				General Fund/EXPENDITURES/SPED ARP IDEA		173.70	
			1R9X-FD4Y-6MFF	HomeMate Heated Electric Blanket - McKinney Vento Container, Tie/Belt Rack, Hole Punch	1400007970	99.43	
10 E 530 0200 27 5610 5400 0000 0000 0				General Fund/EXPENDITURES/ALTERNATIVE BASIC ED		29.72	
10 E 530 1322 27 5610 0000 0000 0000 0				General Fund/EXPENDITURES/HOMELESS ARP		69.71	
			1VY1-PX17-CLGY	DISTRICT OFFICE SUPPLIES	1000010641	112.10	
10 E 530 9700 13 5610 0000 0000 0000 0				General Fund/EXPENDITURES/GENERAL SUPPORTIVE SERV		112.10	
			1XNC-DXYG-1DGP	MICROSCOPES & BOOKS	1400007968	187.05	

Check Nbr	Vendor Name	Check Date	Invoice Number	Invoice Desc	PO Number	Invoice Amount	Check Amount
10 E 530 0200 27 5610 5400 0000 0000 0				General Fund/EXPENDITURES/ALTERNATIVE BASIC ED		127.68	
10 E 530 0200 27 5640 5400 0000 0000 0				General Fund/EXPENDITURES/ALTERNATIVE BASIC ED		30.40	
10 E 530 0200 23 5610 5400 0000 0000 0				General Fund/EXPENDITURES/ALTERNATIVE BASIC ED		28.97	
122340	AMAZON	12/29/2022	GESS-111122	TONER P2035N 05A	1100007880	42.71	2,559.50
10 E 530 0100 27 5610 1100 0000 0000 0				General Fund/EXPENDITURES/BASIC EDUCATION		42.71	
			GESS-111222	4 CUBE CHAIRS	1100007879	215.16	
10 E 530 2100 27 5610 1100 0000 0000 0				General Fund/EXPENDITURES/SPED STATE		215.16	
			GESS-111422	SANITARY AND NURSING SUPPLIES	1100007866	440.50	
10 E 530 0100 26 5610 0000 0000 0000 0				General Fund/EXPENDITURES/BASIC EDUCATION		440.50	
			GESS-111622	Conscious Discipline Building Resilient Classrooms-book Inclusionary Transitional Kindergarten grant	1100007882	161.37	
10 E 530 1294 27 5640 1100 0000 0000 0				General Fund/EXPENDITURES/INCLUSIVE TRANSITIONAL KINDER		161.37	
			GESS-120122	FAX MACHINE	1100007872	-215.08	
10 E 530 0100 23 5610 1100 0000 0000 0				General Fund/EXPENDITURES/BASIC EDUCATION		-215.08	
			GESS-120222	OPEN PURCHASE ORDER	1100007863	309.24	
10 E 530 0100 22 5640 1100 0000 0000 0				General Fund/EXPENDITURES/BASIC EDUCATION		309.24	
			JJSHS-111222	Principles to Action: Ensuring Mathematical Success for All	1300007834	218.05	
10 E 530 0100 27 5640 4300 3200 0000 0				General Fund/EXPENDITURES/BASIC EDUCATION		218.05	
			JJSHS-11172	LAP High Poverty- used for Edgenuity - Bulk on-ear Headphones - 10 Pack	1300007835	388.59	
10 E 530 5500 27 5610 4300 2020 0000 0				General Fund/EXPENDITURES/LAP		388.59	
			MAINT-111922	Video Surveillance Signs	2300006604	94.91	
10 E 530 9700 64 5610 0000 0000 0000 0				General Fund/EXPENDITURES/GENERAL SUPPORTIVE SERV		94.91	

Check Nbr	Vendor Name	Check Date	Invoice Number	Invoice Desc	PO Number	Invoice Amount	Check Amount
			QL-111122	STCU Grant Money, Electric Can opener, Mesh Strainer, Basting brush, Deep Fryer	1400007948	127.55	
10 E 530 0200 27 5610 5400 1740 0000 1				General Fund/EXPENDITURES/ALTERNATIVE BASIC ED		127.55	
			QL-111622	STCU MONEY Cooking class NuWave Brio 6 quart Air fry, OTHER Metal Lemon Squeezer, Printer Ink, Graveyard Book, Balloons over Broadway, stainless chains	1400007954	685.00	
10 E 530 0200 27 5610 5400 0000 0000 0				General Fund/EXPENDITURES/ALTERNATIVE BASIC ED		94.87	
10 E 530 0200 23 5610 5400 0000 0000 0				General Fund/EXPENDITURES/ALTERNATIVE BASIC ED		499.30	
10 E 530 0200 27 5610 5400 1740 0000 1				General Fund/EXPENDITURES/ALTERNATIVE BASIC ED		90.83	
			QL-111622B	Lamination Film Rolls	1400007955	91.50	
10 E 530 0200 24 5610 5400 0000 0000 0				General Fund/EXPENDITURES/ALTERNATIVE BASIC ED		91.50	
122341	BOOKSHARK LLC	12/29/2022	BI0012339	Math Alpha Beta Gamma Delta, Science kit and components	1400007888	812.28	1,299.45
10 E 530 0200 33 5640 5400 0000 0000 0				General Fund/EXPENDITURES/ALTERNATIVE BASIC ED		812.28	
			BI0013834	HISTORY, SCIENCE, ORGAMI, GEOGRAPHY	1400007906	487.17	
10 E 530 0200 33 5640 5400 0000 0000 0				General Fund/EXPENDITURES/ALTERNATIVE BASIC ED		487.17	
122342	CANON FINANCIAL SERVICES	12/29/2022	29678767	Copier Lease Contract 05214/3091	1000010515	713.48	755.85
10 E 530 0100 23 7442 1100 0000 0000 0				General Fund/EXPENDITURES/BASIC EDUCATION		296.24	
10 E 530 0100 23 7442 4300 0000 0000 0				General Fund/EXPENDITURES/BASIC EDUCATION		266.88	
10 E 530 0200 23 7442 5400 0000 0000 0				General Fund/EXPENDITURES/ALTERNATIVE BASIC ED		41.92	
10 E 530 9700 13 7442 0000 0000 0000 0				General Fund/EXPENDITURES/GENERAL SUPPORTIVE SERV		108.44	
			29678779	Copier Lease Contract 05214/3091	1000010515	42.37	
10 E 530 0200 23 7442 5400 0000 0000 0				General Fund/EXPENDITURES/ALTERNATIVE BASIC ED		42.37	
122343	CENTRAL WASHINGTON UNIVERSITY	12/29/2022	121322	COLLEGE IN THE HIGH SCHOOL-FALL	1000010514	13,640.25	13,640.25

Check Nbr	Vendor Name	Check Date	Invoice Number	Invoice Desc	PO Number	Invoice Amount	Check Amount
				2022			
10 E 530 5811 27 7565 4300 1530 0000 0				General Fund/EXPENDITURES/DUAL CREDIT GRANT		13,640.25	
122344	CENTURYLINK	12/29/2022	121522	PHONE CHARGES ACCT #300738678	1000010516	400.63	400.63
10 E 530 9700 65 7530 0000 0000 0000 0				General Fund/EXPENDITURES/GENERAL SUPPORTIVE SERV		400.63	
122345	CENTURYLINK	12/29/2022	620875908	PHONE SERVICE ACCT #84728321	1000010517	56.82	56.82
10 E 530 9700 65 7530 0000 0000 0000 0				General Fund/EXPENDITURES/GENERAL SUPPORTIVE SERV		56.82	
122346	CHEWELAH AUTO PARTS	12/29/2022	122522	TRANSPORTATION SUPPLIES ACCT #68	1000010519	84.58	84.58
10 E 530 9700 63 5610 4300 0000 0000 0				General Fund/EXPENDITURES/GENERAL SUPPORTIVE SERV		30.51	
10 E 530 9700 75 5610 0000 0000 0000 0				General Fund/EXPENDITURES/GENERAL SUPPORTIVE SERV		31.83	
10 E 530 9900 53 5610 0000 0000 0000 0				General Fund/EXPENDITURES/PUPIL TRANSPORTATION		22.24	
122347	CHEWELAH BOWLING CENTER	12/29/2022	121422	SPED - BOWLING AND SHOES ADULT DAILY LIVING/COMMUNITY ACCESS 5 STUDENTS 6 TRIPS A YEAR	1300007764	30.00	30.00
10 E 530 2100 27 7340 4300 0000 0000 0				General Fund/EXPENDITURES/SPED STATE		30.00	
122348	CHEWELAH SCHOOL DISTRICT #36 I	12/29/2022	122722	TO FROM AND EXTRACURRICULAR IN LIEU OF TRANSPORTATION MCKINNEY VENTO Nov-Dec	1000010640	783.75	783.75
10 E 530 9900 52 8580 0000 4450 0000 0				General Fund/EXPENDITURES/PUPIL TRANSPORTATION		332.50	
10 E 530 0100 28 8580 4300 4450 0000 1				General Fund/EXPENDITURES/BASIC EDUCATION		451.25	
122349	COLVILLE GLASS	12/29/2022	70693	Colville Glass, Gess Classroom 4 Window	2300006612	228.85	228.85
10 E 530 9700 64 5610 1100 0000 0000 0				General Fund/EXPENDITURES/GENERAL SUPPORTIVE SERV		228.85	
122350	DARTMORE SCHOOL	12/29/2022	42565	SPED STUDENT ACADEMIC INSTRUCTION FOR 2022-2023-DECEMBER	2100006226	7,380.00	7,380.00
10 E 530 2100 27 7569 4300 3900 0000 0				General Fund/EXPENDITURES/SPED STATE		7,380.00	
122351	DEER PARK HIGH SCHOOL	12/29/2022	120122	Deer Park Wrestling Invitational	1300007796	300.00	300.00
10 E 530 0100 28 7580 4300 0000 0000 1				General Fund/EXPENDITURES/BASIC EDUCATION		300.00	

Check Nbr	Vendor Name	Check Date	Invoice Number	Invoice Desc	PO Number	Invoice Amount	Check Amount
122352	LUNDQUIST, TONI J	12/29/2022	121222	REIMBURSE FOR EPSON SALT	0	10.53	10.53
10 E 530 0200 27 5610 5400 0000 0000 0			General Fund/EXPENDITURES/ALTERNATIVE BASIC ED			10.53	
122353	MILDES, ROB	12/29/2022	121322	DECEMBER PT SERVICES	1000010536	1,200.00	1,200.00
10 E 530 2100 26 7322 0000 0000 0000 0			General Fund/EXPENDITURES/SPED STATE			1,200.00	
122354	NORTH IDAHO COLLEGE WRESTLING	12/29/2022	20902	Wrestling Tri-State Wrestling Tournament	1300007797	400.00	400.00
10 E 530 0100 28 7580 4300 0000 0000 1			General Fund/EXPENDITURES/BASIC EDUCATION			400.00	
122355	OTHELLO HIGH SCHOOL	12/29/2022	121022	Boys wrestling Leonard Schutte Roundup December 10, 2022	1000010647	200.00	200.00
10 E 530 0100 28 7580 4300 0000 0000 1			General Fund/EXPENDITURES/BASIC EDUCATION			200.00	
122356	PERRINS, JASON	12/29/2022	121622	REIMBURSE FOR CANDY CANES FOR SANTA VISIT TO SCHOOLS	0	71.04	71.04
10 E 530 9700 12 5610 0000 0000 0000 0			General Fund/EXPENDITURES/GENERAL SUPPORTIVE SERV			71.04	
122357	PURCHASE POWER	12/29/2022	121822	POSTAGE FOR METER ACCT #8000-9090-1050-45 90	1000010544	200.00	200.00
10 E 530 0100 23 5610 1100 0000 0000 0			General Fund/EXPENDITURES/BASIC EDUCATION			167.31	
10 E 530 0100 23 5610 4300 0000 0000 0			General Fund/EXPENDITURES/BASIC EDUCATION			24.80	
10 E 530 9700 13 5610 0000 0000 0000 0			General Fund/EXPENDITURES/GENERAL SUPPORTIVE SERV			5.25	
10 E 530 0200 23 5610 5400 0000 0000 0			General Fund/EXPENDITURES/ALTERNATIVE BASIC ED			2.64	
122358	SITE ONE LANDSCAPE SUPPLY	12/29/2022	118593777-001	Pitcher mound clay, Baseball	2300006613	31.53	31.53
10 E 530 9700 62 5610 0000 0000 0000 0			General Fund/EXPENDITURES/GENERAL SUPPORTIVE SERV			31.53	
122359	TILLA, KALLIE J	12/29/2022	120922	REIMBURSE FOR AMAZON HEADPHONES & AR PRIZES	0	192.70	192.70
10 E 530 0100 27 5610 1100 0000 0000 0			General Fund/EXPENDITURES/BASIC EDUCATION			192.70	
122360	UNITED SCHOOLS INSURANCE PROGR	12/29/2022	2022-34909-1029-1	INSURANCE PREMIUM TO ADD FORD F350 MAINTENANCE TRUCK TO POLICY	1000010648	862.47	862.47
10 E 530 9700 68 7520 0000 0000 0000 0			General Fund/EXPENDITURES/GENERAL SUPPORTIVE SERV			862.47	

Check Nbr	Vendor Name	Check Date	Invoice Number	Invoice Desc	PO Number	Invoice Amount	Check Amount
122361	VERIZON WIRELESS	12/29/2022	9922248218	CELL PHONE SERVICES ACCT #365401170-00001	1000010558	637.65	657.15
10 E 530 9700 65 7530 0000 0000 0				General Fund/EXPENDITURES/GENERAL SUPPORTIVE SERV		637.65	
			9923004141	CELL PHONE SERVICES ACCT #264213436-00001	1000010558	19.50	
10 E 530 9700 65 7530 0000 0000 0				General Fund/EXPENDITURES/GENERAL SUPPORTIVE SERV		19.50	
122362	WALTER E NELSON CO	12/29/2022	487008	Ice Melt	2300006610	608.97	608.97
10 E 530 9700 64 5610 4300 0000 0000 0				General Fund/EXPENDITURES/GENERAL SUPPORTIVE SERV		608.97	
122363	WASHINGTON OFFICIALS ASSOCIATI	12/29/2022	8138	OFFICIAL FEES FOR MIDDLE SCHOOL SPORTS-FOOTBALL, GIRLS BASKETBALL AND VOLLEYBALL	1000010561	2,516.25	2,516.25
10 E 530 0100 28 7340 4300 0000 0000 1				General Fund/EXPENDITURES/BASIC EDUCATION		2,516.25	
122364	ARROW CONSTRUCTION	12/29/2022	21578F	RESURFACE TENNIS COURTS-release or retainage	7100000823	2,121.34	2,121.34
20 L 601 0000 00 0000 0000 0000 0000				Capital Projects/ACCOUNTS PAYABLE		2,121.34	
122365	EMERALD CITY STATEWIDE	12/29/2022	16350	Gess playground roofing Fencing	2300006573	2,742.94	2,742.94
20 E 530 1300 12 5000 4000 0000 0000 0				Capital Projects/EXPENDITURES/ESSER III		2,742.94	
122366	MCKINSTRY ESSENTION, LLC	12/29/2022	20059297	SERVICES ON SMALL SCHOOL MODERNIZATION JJSHS HVAC PROJECT	7100000855	18,779.43	24,588.02
20 E 530 0000 32 7000 3000 0000 0000 0				Capital Projects/EXPENDITURES/Unassigned		18,779.43	
			20059333	SERVICES ON SMALL SCHOOL MODERNIZATION JJSHS HVAC PROJECT	7100000855	5,808.59	
20 E 530 0000 32 7000 3000 0000 0000 0				Capital Projects/EXPENDITURES/Unassigned		5,808.59	
122367	EXPECT A LOT	12/29/2022	2167	Decal/Digital Printing	8300006984	346.80	346.80
40 E 530 2010 00 0000 4300 0000 0000 0				Associated Student Body Fund/EXPENDITURES/ATHLETIC GENE		373.16	
40 L 630 0000 00 0000 0000 0000 0000				Associated Student Body Fund/DUE TO OTHER GOVERNMENT UN		-26.36	
122368	SUNRISE CUSTOM APPAREL	12/29/2022	191	Basketball Girls- Spirit Packs	8300006979	755.73	755.73

Check Nbr	Vendor Name	Check Date	Invoice Number	Invoice Desc	PO Number	Invoice Amount	Check Amount
40 E 530 2120 00 0000 4300 0000 0000 0				Associated Student Body Fund/EXPENDITURES/BASKETBALL GI		755.73	
				30 Computer		Check(s) For a Total of	65,822.52

	0	Manual	Checks For a Total of	0.00
	0	Wire Transfer	Checks For a Total of	0.00
	0	ACH	Checks For a Total of	0.00
	30	Computer	Checks For a Total of	65,822.52
Total For	30	Manual, Wire Tran, ACH & Computer	Checks	65,822.52
Less	0	Voided	Checks For a Total of	0.00
			Net Amount	65,822.52

FUND SUMMARY

Fund	Description	Balance Sheet	Revenue	Expense	Total
10	General Fund	0.00	0.00	35,267.69	35,267.69
20	Capital Projects	2,121.34	0.00	27,330.96	29,452.30
40	Associated Student Body Fund	-26.36	0.00	1,128.89	1,102.53

The following vouchers, as audited and certified by the Auditing Officer as required by RCW 42.24.080, and those expense reimbursement claims certified as required by RCW 42.24.090, are approved for payment. Those payments have been recorded on this listing which has been made available to the board.

As of January 18, 2023, the board, by a _____ vote, approves payments, totaling \$1,703.10. The payments are further identified in this document.

Total by Payment Type for Cash Account, AP ACH:
ACH Numbers 222300004 through 222300006, totaling \$1,703.10

Secretary _____ Board Member _____
Board Member _____ Board Member _____
Board Member _____ Board Member _____

Check Nbr	Vendor Name	Check Date	Invoice Number	Invoice Desc	PO Number	Invoice Amount	Check Amount
222300004	WA STATE DEPT OF REVENUE	12/29/2022	CTAX11 20221227AAA	Comp Tax owed for Cash Account 11 through 12/31/2022	0	838.54	838.54
10 L 630 0000 00 0000 0000 0000 0000			General Fund/DUE TO OTHER	GOVERNMENT UNITS		838.54	
222300005	WA STATE DEPT OF REVENUE	12/29/2022	CTAX11 20221227AAB	Comp Tax owed for Cash Account 11 through 12/31/2022	0	691.45	691.45
20 L 630 0000 00 0000 0000 0000 0000			Capital Projects/DUE TO OTHER	GOVERNMENT UNITS		691.45	
222300006	WA STATE DEPT OF REVENUE	12/29/2022	CTAX11 20221227AAC	Comp Tax owed for Cash Account 11 through 12/31/2022	0	173.11	173.11
40 L 630 0000 00 0000 0000 0000 0000			Associated Student Body Fund/DUE TO OTHER	GOVERNMENT UN		173.11	
			3	ACH	Check(s) For a Total of		1,703.10

	0	Manual	Checks For a Total of	0.00
	0	Wire Transfer	Checks For a Total of	0.00
	3	ACH	Checks For a Total of	1,703.10
	0	Computer	Checks For a Total of	0.00
Total For	3	Manual, Wire Tran, ACH & Computer	Checks	1,703.10
Less	0	Voided	Checks For a Total of	0.00
			Net Amount	1,703.10

FUND SUMMARY

Fund	Description	Balance Sheet	Revenue	Expense	Total
10	General Fund	838.54	0.00	0.00	838.54
20	Capital Projects	691.45	0.00	0.00	691.45
40	Associated Student Body Fund	173.11	0.00	0.00	173.11

The following vouchers, as audited and certified by the Auditing Officer as required by RCW 42.24.080, and those expense reimbursement claims certified as required by RCW 42.24.090, are approved for payment. Those payments have been recorded on this listing which has been made available to the board.

As of January 18, 2023, the board, by a _____ vote, approves payments, totaling \$186,512.38. The payments are further identified in this document.

Total by Payment Type for Cash Account, County Treasurer Warrants:
Warrant Numbers 122371 through 122428, totaling \$186,512.38

Secretary _____ Board Member _____
Board Member _____ Board Member _____
Board Member _____ Board Member _____

Check Nbr	Vendor Name	Check Date	Invoice Number	Invoice Desc	PO Number	Invoice Amount	Check Amount
122371	A-L COMPRESSED GASES INC	01/13/2023	0003010962	OPEN PO FOR SUPPLIES	1000010512	78.18	78.18
10 E 530 3100 27 5610 4300 2400 0000 0				General Fund/EXPENDITURES/VOCATIONAL		78.18	
122372	ALSCO	01/13/2023	LSPO2590285	coverall and rags	1000010509	33.94	33.94
10 E 530 9900 53 7420 0000 0000 0000 0				General Fund/EXPENDITURES/PUPIL TRANSPORTATION		33.94	
122373	AMAZON	01/13/2023	114G-3Q46-671Y	McKinney Vento winter clothes-HOMELESS ARP GRANT	1100007896	443.73	3,661.52
10 E 530 1322 27 5610 1100 0000 0000 0				General Fund/EXPENDITURES/HOMELESS ARP		443.73	
			11XW-6M77-KK66	Wood Lathe Parts, Tool Replacement, Clamp Hardware	1300007846	251.73	
10 E 530 3100 27 5610 4300 2400 0000 0				General Fund/EXPENDITURES/VOCATIONAL		251.73	
			13C4-LHG9-RGMR	Coddling the American Mind-book-Title II Book Study	1100007900	142.42	
10 E 530 5290 31 5640 1100 0000 0000 0				General Fund/EXPENDITURES/TITLE II TEACHER PRINCIPAL		142.42	
			13L6-74RL-PVH7	4x4 Magnetic White Board, 8x4 Magnetic White Board	1300007848	-364.66	
10 E 530 0100 27 5610 4300 3200 0000 0				General Fund/EXPENDITURES/BASIC EDUCATION		-221.55	
10 E 530 0100 27 5610 4300 3400 0000 0				General Fund/EXPENDITURES/BASIC EDUCATION		-143.11	
			16QR-CJFW-346R	CTE - Permanent Fabric Markers,	1300007844	36.02	

Check Nbr	Vendor Name	Check Date	Invoice Number	Invoice Desc	PO Number	Invoice Amount	Check Amount
10 E 530 3100 27 5610 4300 0000 0000 0				Short Sleeve Tee Shirt		36.02	
			General Fund/EXPENDITURES/VOCATIONAL				
			16XV-HN4N-LGRW	Wood Lathe Parts, Tool Replacement, Clamp Hardware	1300007846	123.91	
10 E 530 3100 27 5610 4300 2400 0000 0			General Fund/EXPENDITURES/VOCATIONAL			123.91	
			16XV-HN4N-P6XL	Color Ink Cartridges: Black, Magenta, Cyan	1300007855	781.00	
10 E 530 0100 23 5610 4300 0000 0000 0			General Fund/EXPENDITURES/BASIC EDUCATION			781.00	
			17MF-CR96-WC93	McKinney Vento winter clothes-HOMELESS ARP GRANT	1100007896	40.56	
10 E 530 1322 27 5610 1100 0000 0000 0			General Fund/EXPENDITURES/HOMELESS ARP			40.56	
			1C9W-33M9-QT9C	2023 Planner	1300007858	26.89	
10 E 530 0100 24 5610 4300 0000 0000 0			General Fund/EXPENDITURES/BASIC EDUCATION			26.89	
			1DFC-6QFV-N66P	Wood Lathe Parts, Tool Replacement, Clamp Hardware	1300007846	325.94	
10 E 530 3100 27 5610 4300 2400 0000 0			General Fund/EXPENDITURES/VOCATIONAL			325.94	
			1HXK-JNR1-QWPH	4x4 Magnetic White Board, 8x4 Magnetic White Board	1300007848	600.20	
10 E 530 0100 27 5610 4300 3200 0000 0			General Fund/EXPENDITURES/BASIC EDUCATION			364.66	
10 E 530 0100 27 5610 4300 3400 0000 0			General Fund/EXPENDITURES/BASIC EDUCATION			235.54	
			1NMR-XLXW-KVCW	Romeo and Juliet (Folger Shakespeare Library (3) 6.99	1400007973	29.00	
10 E 530 0200 27 5610 5400 0000 0000 0			General Fund/EXPENDITURES/ALTERNATIVE BASIC ED			29.00	
			1QFT-GCGR-PW6V	File cabinets, chair mats, paper punch-ESSER III for part of file cabinet to maintain records on addressing learning loss	1100007895	995.70	

Check Nbr	Vendor Name	Check Date	Invoice Number	Invoice Desc	PO Number	Invoice Amount	Check Amount
10 E 530 0100 23 5610 1100 0000 0000 0				General Fund/EXPENDITURES/BASIC EDUCATION		958.58	
10 E 530 1200 27 5610 1100 0000 0000 0				General Fund/EXPENDITURES/Fed Stim - School Improve		37.12	
			1T4T-TYQW-1GKX	OPEN PURCHASE ORDER FOR BUILDING SUPPLIES (PAPER, TONER, ETC)	1100007869	93.49	
10 E 530 0100 27 5610 1100 0000 0000 0				General Fund/EXPENDITURES/BASIC EDUCATION		93.49	
			1WRW-M779-6N9K	Supplies for "Title/Ornament Night" Title I Parent Meeting	1100007885	41.07	
10 E 530 5100 27 5610 1100 3390 0000 0				General Fund/EXPENDITURES/TITLE I		41.07	
			1X34-9XGY-3P6W	Toner Cartridge	1300007851	191.46	
10 E 530 2100 27 5650 4300 0000 0000 0				General Fund/EXPENDITURES/SPED STATE		191.46	
			1XRK-W3VT-FWMY	Toner Cartridge	1300007851	-163.54	
10 E 530 2100 27 5650 4300 0000 0000 0				General Fund/EXPENDITURES/SPED STATE		-163.54	
			1YT1-GYWK-H477	McKinney Vento winter clothes-HOMELESS ARP GRANT	1100007896	40.52	
10 E 530 1322 27 5610 1100 0000 0000 0				General Fund/EXPENDITURES/HOMELESS ARP		40.52	
			QC9W-33M9-QT9C-	CTE - Permanent Fabric Markers, Short Sleeve Tee Shirt	1300007844	26.08	
10 E 530 3100 27 5610 4300 0000 0000 0				General Fund/EXPENDITURES/VOCATIONAL		26.08	
122374 AMEND MUSIC CENTER		01/13/2023	S2273	Instrument Repair	1300007738	1,782.15	2,689.03
10 E 530 0100 27 5610 4300 1400 0000 0				General Fund/EXPENDITURES/BASIC EDUCATION		1,782.15	
			S2274	Instrument Repair	1300007738	906.88	
10 E 530 0100 27 5610 4300 1400 0000 0				General Fund/EXPENDITURES/BASIC EDUCATION		906.88	
122375 AT&T MOBILITY		01/13/2023	287301239699X122822	BACKUP INTERNET CONNECTION FOR PHONE SYSTEM	1000010510	43.23	43.23
10 E 530 9700 65 7530 0000 0000 0000 0				General Fund/EXPENDITURES/GENERAL SUPPORTIVE SERV		43.23	
122376 BER		01/13/2023	5094457	MAXIMIZING YOUR EFFECTIVENESS AS AN INSTRUCTIONAL COACH SEMINAR -NOVEMBER 7/8 for	1100007841	595.00	595.00

Check Nbr	Vendor Name	Check Date	Invoice Number	Invoice Desc	PO Number	Invoice Amount	Check Amount
10 E 530 5290 31 7330 1100 0000 0000 0				JULIE General Fund/EXPENDITURES/TITLE II TEACHER PRINCIPL		595.00	
122377	BOOKSHARK LLC	01/13/2023	BI0010383	CURRICULUM SUPPLIES FOR QUARTZITE	1400007883	2,615.22	4,104.80
10 E 530 0200 33 5640 5400 0000 0000 0				General Fund/EXPENDITURES/ALTERNATIVE BASIC ED		2,615.22	
10 E 530 0200 33 5640 5400 0000 0000 0			BI0016193	Science, American History, Math, Spelling	1400007969	1,415.36	
10 E 530 0200 33 5640 5400 0000 0000 0				General Fund/EXPENDITURES/ALTERNATIVE BASIC ED		1,415.36	
10 E 530 0200 33 5640 5400 0000 0000 0			BI0016622	Human Anatomy	1400007979	74.22	
10 E 530 0200 33 5640 5400 0000 0000 0				General Fund/EXPENDITURES/ALTERNATIVE BASIC ED		74.22	
122378	BYU INDEPENDENT STUDY	01/13/2023	DCE-00013253	Online classes for students	1400007923	150.00	150.00
10 E 530 0200 33 5650 5400 0000 0000 0				General Fund/EXPENDITURES/ALTERNATIVE BASIC ED		150.00	
122379	CHARLIE'S PRODUCE	01/13/2023	834591	FOOD & SUPPLIES	1000010579	176.55	997.00
10 E 530 9800 42 5630 0000 0000 0000 0				General Fund/EXPENDITURES/FOOD SERVICES		176.55	
10 E 530 9800 42 5630 0000 0000 0000 0			835048	FOOD & SUPPLIES	1000010579	-66.95	
10 E 530 9800 42 5630 0000 0000 0000 0				General Fund/EXPENDITURES/FOOD SERVICES		-66.95	
10 E 530 9800 42 5630 0000 0000 0000 0			839406	FOOD & SUPPLIES	1000010579	611.80	
10 E 530 9800 42 5630 0000 0000 0000 0				General Fund/EXPENDITURES/FOOD SERVICES		611.80	
10 E 530 9800 42 5630 0000 0000 0000 0			840068	FOOD & SUPPLIES	1000010579	275.60	
10 E 530 9800 42 5630 0000 0000 0000 0				General Fund/EXPENDITURES/FOOD SERVICES		275.60	
122380	CHEWELAH BOWLING CENTER	01/13/2023	010423	SPED - BOWLING AND SHOES ADULT DAILY LIVING/COMMUNITY ACCESS 5 STUDENTS 6 TRIPS A YEAR	1300007764	85.00	85.00
10 E 530 2100 27 7340 4300 0000 0000 0				General Fund/EXPENDITURES/SPED STATE		85.00	
122381	CITY OF CHEWELAH	01/13/2023	122922	UTILITIES	1000010520	14,013.43	14,013.43
10 E 530 9700 65 7410 0000 0000 0000 0				General Fund/EXPENDITURES/GENERAL SUPPORTIVE SERV		330.29	
10 E 530 9700 65 7420 0000 0000 0000 0				General Fund/EXPENDITURES/GENERAL SUPPORTIVE SERV		98.10	
10 E 530 9700 65 7622 0000 0000 0000 0				General Fund/EXPENDITURES/GENERAL SUPPORTIVE SERV		1,710.67	
10 E 530 9700 65 7410 1100 0000 0000 0				General Fund/EXPENDITURES/GENERAL SUPPORTIVE SERV		274.53	
10 E 530 9700 65 7420 1100 0000 0000 0				General Fund/EXPENDITURES/GENERAL SUPPORTIVE SERV		1,180.45	
10 E 530 9700 65 7622 1100 0000 0000 0				General Fund/EXPENDITURES/GENERAL SUPPORTIVE SERV		3,204.20	
10 E 530 9700 65 7410 2200 0000 0000 0				General Fund/EXPENDITURES/GENERAL SUPPORTIVE SERV		103.12	
10 E 530 9700 65 7622 2200 0000 0000 0				General Fund/EXPENDITURES/GENERAL SUPPORTIVE SERV		633.48	

Check Nbr	Vendor Name	Check Date	Invoice Number	Invoice Desc	PO Number	Invoice Amount	Check Amount
10 E 530 9700 65 7410 4300 0000 0000 0				General Fund/EXPENDITURES/GENERAL SUPPORTIVE SERV		255.75	
10 E 530 9700 65 7420 4300 0000 0000 0				General Fund/EXPENDITURES/GENERAL SUPPORTIVE SERV		1,064.25	
10 E 530 9700 65 7622 4300 0000 0000 0				General Fund/EXPENDITURES/GENERAL SUPPORTIVE SERV		4,544.27	
10 E 530 9700 65 7410 5400 0000 0000 0				General Fund/EXPENDITURES/GENERAL SUPPORTIVE SERV		112.93	
10 E 530 9700 65 7420 5400 0000 0000 0				General Fund/EXPENDITURES/GENERAL SUPPORTIVE SERV		181.95	
10 E 530 9700 65 7622 5400 0000 0000 0				General Fund/EXPENDITURES/GENERAL SUPPORTIVE SERV		319.44	
122382	COMMUNITY COLLEGES OF SPOKANE	01/13/2023	CA-0000011144	OPEN PO FOR RUNNING START	1000010521	2,964.88	84,230.10
10 E 530 3100 27 7565 4300 3840 0000 0				General Fund/EXPENDITURES/VOCATIONAL		2,964.88	
			CA-0000011174	OPEN PO FOR RUNNING START	1000010521	81,265.22	
10 E 530 0100 27 7565 4300 3840 0000 0				General Fund/EXPENDITURES/BASIC EDUCATION		73,645.80	
10 E 530 3100 27 7565 4300 3840 0000 0				General Fund/EXPENDITURES/VOCATIONAL		7,619.42	
122383	CRYSTAL SPRINGS	01/13/2023	15901662 123122	WATER AND COOLER RENTAL	1400007875	26.34	93.63
10 E 530 0200 23 5610 5400 0000 0000 0				General Fund/EXPENDITURES/ALTERNATIVE BASIC ED		26.34	
			15902043 123122	WATER AND COOLER RENTAL	1000010522	67.29	
10 E 530 9700 13 5610 0000 0000 0000 0				General Fund/EXPENDITURES/GENERAL SUPPORTIVE SERV		67.29	
122384	DAVENPORT HIGH SCHOOL	01/13/2023	090322	VOLLEYBALL Tournament - Varsity and Jr Davenport High School	1300007758	250.00	250.00
10 E 530 0100 28 7580 4300 0000 0000 1				General Fund/EXPENDITURES/BASIC EDUCATION		250.00	
122385	DEERE CREDIT INC	01/13/2023	2730038	LEASE 1600 COMMERCIAL WIDE AREA LAWN MOWER	1000010524	647.17	647.17
10 E 530 9700 84 7831 0000 0000 0000 0				General Fund/EXPENDITURES/GENERAL SUPPORTIVE SERV		647.17	
122386	DRAGONFLY WELLNESS AND EDUCATI	01/13/2023	010323	MENTAL HEALTH & BEHAVIOR SUPPORT SERVICES & STAFF TRAINING for December	1000010567	5,512.50	5,512.50
10 E 530 1200 24 7322 0000 1665 0000 0				General Fund/EXPENDITURES/Fed Stim - School Improve		5,512.50	
122387	ELAN CARDMEMBER SERVICE	01/13/2023	ED-112922	Edmark Reading Program, 2E: Online - 5 Student SeatsPRO-ED Inc	1400007963	376.95	9,152.72
10 E 530 0200 33 5610 5400 0000 0000 0				General Fund/EXPENDITURES/ALTERNATIVE BASIC ED		376.95	

Check Nbr	Vendor Name	Check Date	Invoice Number	Invoice Desc	PO Number	Invoice Amount	Check Amount
			ED-120522	BENNYS COLVILLE INN-2 NIGHT HOTEL ROOMS FOR MCKINNEY VENTO STUDENT	0	205.10	
10 E 530 5100 27 5610 4300 2030 0000 0				General Fund/EXPENDITURES/TITLE I		205.10	
			ED-121222	Multiplication and Division Games 7.75 Fluency practice for Math Center	1400007972	8.34	
10 E 530 0200 27 5610 5400 0000 0000 0				General Fund/EXPENDITURES/ALTERNATIVE BASIC ED		8.34	
			ED-1213252	Teachers pay teachers, Middle school stem activities ordered by Laura 52.73 Order # 215087191	1400007975	52.73	
10 E 530 0200 27 5610 5400 0000 0000 0				General Fund/EXPENDITURES/ALTERNATIVE BASIC ED		52.73	
			ED-121722	UPS STORE-COPIES OF BLUEPRINTS FOR MAINTENANCE	0	263.36	
10 E 530 9700 64 5610 0000 0000 0000 0				General Fund/EXPENDITURES/GENERAL SUPPORTIVE SERV		263.36	
			JP-110822	Heggerty for 5 students	1100007883	356.00	
10 L 630 0000 00 0000 0000 0000 0000				General Fund/DUE TO OTHER GOVERNMENT UNITS		-27.06	
10 E 530 0100 27 5650 1100 0000 0000 0				General Fund/EXPENDITURES/BASIC EDUCATION		383.06	
			JP-120922	SAFEWAY-BUS DRIVER SAFETY MEETING REFRESHMENTS	0	86.88	
10 E 530 9700 12 5610 0000 0000 0000 0				General Fund/EXPENDITURES/GENERAL SUPPORTIVE SERV		86.88	
			JP-121422	Chef' Store Hamilton Beach Coffee Maker x2	1100007903	435.56	
10 E 530 0100 23 5610 1100 0000 0000 0				General Fund/EXPENDITURES/BASIC EDUCATION		435.56	
			JP-122522	CANVA MONTHLY SUBSCRIPTION TO CREATE FLYERS & NEWSLETTERS	1000010526	12.99	
10 L 630 0000 00 0000 0000 0000 0000				General Fund/DUE TO OTHER GOVERNMENT UNITS		-0.99	
10 E 530 9700 12 5650 0000 0000 0000 0				General Fund/EXPENDITURES/GENERAL SUPPORTIVE SERV		13.98	

Check Nbr	Vendor Name	Check Date	Invoice Number	Invoice Desc	PO Number	Invoice Amount	Check Amount
			JT-120622	Zoro, Keys and cores Best	2300006608	394.95	
10 E 530 9700 64 5610 0000 0000 0000 0				General Fund/EXPENDITURES/GENERAL SUPPORTIVE SERV		394.95	
			JT-121922	Zoro, JHS, weight room door lock	2300006615	211.69	
10 E 530 9700 64 5610 4300 0000 0000 0				General Fund/EXPENDITURES/GENERAL SUPPORTIVE SERV		211.69	
			KF-122022	MICROSOFT LICENSE	1000010525	43.04	
10 L 630 0000 00 0000 0000 0000 0000				General Fund/DUE TO OTHER GOVERNMENT UNITS		-3.27	
10 E 530 0100 32 7350 0000 0000 0000 0				General Fund/EXPENDITURES/BASIC EDUCATION		46.31	
			SA-120122	CTE - 2x4 8 ft, 2x4 12 ft., plywood, pine backs, sheeting, studs, long plates, sinkers, screws, dw screws, pine-SUPPLIES FOR CLASS TO BUILD STORAGE	1300007818	5,055.47	
10 E 530 0100 28 5610 4300 0000 0000 1				General Fund/EXPENDITURES/BASIC EDUCATION		2,527.73	
10 E 530 3100 27 5610 4300 2400 0000 0				General Fund/EXPENDITURES/VOCATIONAL		2,527.74	
			SA-120522	Title 5-Archery Equipment - Easton 1820 Aluminum Arrows, Feradyne 34" Block Target, Feradyn Block Target Wheel Kit, CCY 30'x10 Net, Lancaster Maint Kit, Archery Shooter Bowhanger, Floor Quiver	1300007850	1,092.00	
10 L 630 0000 00 0000 0000 0000 0000				General Fund/DUE TO OTHER GOVERNMENT UNITS		-82.99	
10 E 530 5276 27 5610 4300 0000 0000 0				General Fund/EXPENDITURES/RURAL & LOW INCOME		1,174.99	
			SA-120522B	VOC 6 x 108 Sanding Belt, 2 - 80 Grit Sand Paper, 4 - 120 Grit Sand Paper	1300007845	90.49	
10 L 630 0000 00 0000 0000 0000 0000				General Fund/DUE TO OTHER GOVERNMENT UNITS		-6.88	
10 E 530 3100 27 5610 4300 2400 0000 0				General Fund/EXPENDITURES/VOCATIONAL		97.37	

Check Nbr	Vendor Name	Check Date	Invoice Number	Invoice Desc	PO Number	Invoice Amount	Check Amount
			SA-120622	CTE - Permanent Fabric Markers, Short Sleeve Tee Shirt	1300007844	47.27	
10 E 530 3100 27 5610 4300 0000 0000 0				General Fund/EXPENDITURES/VOCATIONAL		47.27	
			SA-122222	Lap High Poverty Jerry Spinelli book Stargirl for LAP classroom	1300007859	419.90	
10 E 530 5500 27 5640 4300 2020 0000 0				General Fund/EXPENDITURES/LAP		419.90	
122388	ESSENTIALS IN WRITING	01/13/2023	188664	Order to stock 9th grade and 7th grade essentials in Writing	1400007903	684.95	684.95
10 E 530 0200 33 5640 5400 0000 0000 0				General Fund/EXPENDITURES/ALTERNATIVE BASIC ED		684.95	
122389	EWU	01/13/2023	202240	COLLEGE IN THE HIGH SCHOOL CLASSES FOR 2022-2023-FALL QUARTER	1000010527	17,875.00	17,875.00
10 E 530 5811 27 7565 4300 1530 0000 0				General Fund/EXPENDITURES/DUAL CREDIT GRANT		17,875.00	
122390	FREEMAN HIGH SCHOOL	01/13/2023	092622	Wrestling Freeman Winter Classic Tournament 12-30-2022	1300007800	300.00	300.00
10 E 530 0100 28 7580 4300 0000 0000 1				General Fund/EXPENDITURES/BASIC EDUCATION		300.00	
122391	H & H INC	01/13/2023	010423	COPIER MONTHLY USAGE CHARGES	1000010529	479.05	479.05
10 E 530 0100 23 7340 1100 0000 0000 0				General Fund/EXPENDITURES/BASIC EDUCATION		189.03	
10 E 530 0100 23 7340 4300 0000 0000 0				General Fund/EXPENDITURES/BASIC EDUCATION		134.38	
10 E 530 9700 13 7340 0000 0000 0000 0				General Fund/EXPENDITURES/GENERAL SUPPORTIVE SERV		122.40	
10 E 530 0200 23 7340 5400 0000 0000 0				General Fund/EXPENDITURES/ALTERNATIVE BASIC ED		33.24	
122392	HARTILL SAW SHOP	01/13/2023	43244	Maintenance Tractor Service (Hartill's Tractor)	2300006623	569.86	569.86
10 E 530 9700 64 5610 0000 0000 0000 0				General Fund/EXPENDITURES/GENERAL SUPPORTIVE SERV		569.86	
122393	INLAND NORTHWEST THERAPY	01/13/2023	1228	OT SERVICES 2022-2023-DECEMBER	1000010532	2,860.00	5,980.00
10 E 530 2100 26 7322 0000 0000 0000 0				General Fund/EXPENDITURES/SPED STATE		2,860.00	
			1228B	SPEECH SERVICES 2022-2023-DECEMBER	1000010531	3,120.00	

Check Nbr	Vendor Name	Check Date	Invoice Number	Invoice Desc	PO Number	Invoice Amount	Check Amount
10 E 530 2100 26 7322 0000 0000 0000 0				General Fund/EXPENDITURES/SPED STATE		3,120.00	
122394	INSTITUTE FOR EXCELLENCE IN WR	01/13/2023	930249	Primary LA Writing IEW	1400007877	105.34	203.75
10 E 530 0200 33 5640 5400 0000 0000 0				General Fund/EXPENDITURES/ALTERNATIVE BASIC ED		105.34	
			942057	WRITING AND GRAMMAR	1400007889	98.41	
10 E 530 0200 33 5640 5400 0000 0000 0				General Fund/EXPENDITURES/ALTERNATIVE BASIC ED		98.41	
122395	INTRIGUE COMMUNICATIONS INC	01/13/2023	11784	ANNUAL PHONE SYSTEM SUPPORT AND MAINTENANCE PLAN FEB 2023-FEB 2024	1000010643	1,936.80	2,169.48
10 E 530 9700 65 7530 0000 0000 0000 0				General Fund/EXPENDITURES/GENERAL SUPPORTIVE SERV		1,936.80	
			5851	PHONE SERVICES ON ACCOUNT #100152	1000010530	232.68	
10 E 530 9700 65 7530 0000 0000 0000 0				General Fund/EXPENDITURES/GENERAL SUPPORTIVE SERV		232.68	
122396	JMT PETROLEUM	01/13/2023	101211	FUEL ACCT	1000010533	7,037.79	7,037.79
10 E 530 9700 62 5626 0000 0000 0000 0				General Fund/EXPENDITURES/GENERAL SUPPORTIVE SERV		132.39	
10 E 530 9700 75 5626 0000 0000 0000 0				General Fund/EXPENDITURES/GENERAL SUPPORTIVE SERV		1,305.82	
10 E 530 9900 52 5626 0000 0000 0000 0				General Fund/EXPENDITURES/PUPIL TRANSPORTATION		5,143.70	
10 E 530 9900 52 5626 0000 4450 0000 0				General Fund/EXPENDITURES/PUPIL TRANSPORTATION		455.88	
122397	JOHNSTONE SUPPLY	01/13/2023	1371473	Johnston Supply, Refringent, Electric blower motor Gess Room 12	2300006616	722.47	722.47
10 E 530 9700 64 5610 1100 0000 0000 0				General Fund/EXPENDITURES/GENERAL SUPPORTIVE SERV		722.47	
122398	JW PEPPER & SON INC	01/13/2023	364614287	Music-REAL EASY DRUM & HORN & BARITONE ACCENT	1300007791	120.49	493.63
10 E 530 0100 27 5610 4300 1400 0000 0				General Fund/EXPENDITURES/BASIC EDUCATION		120.49	
			364615427	Music BOOKS	1300007791	246.36	
10 E 530 0100 27 5610 4300 1400 0000 0				General Fund/EXPENDITURES/BASIC EDUCATION		246.36	
			364661013	MUSIC For Those Who Have Served Flexible Woodwind Ensemble	1300007791	26.90	
10 E 530 0100 27 5610 4300 1400 0000 0				General Fund/EXPENDITURES/BASIC EDUCATION		26.90	
			364774450	Santa Barbarian - flex	1300007839	67.78	

Check Nbr	Vendor Name	Check Date	Invoice Number	Invoice Desc	PO Number	Invoice Amount	Check Amount
10 E 530 0100 27 5610 4300 1400 0000 0				General Fund/EXPENDITURES/BASIC EDUCATION		67.78	
			364775534	Carol Books & Accent Books	1300007839	32.10	
10 E 530 0100 27 5610 4300 1400 0000 0				General Fund/EXPENDITURES/BASIC EDUCATION		32.10	
122399	KATZER, AMANDA S	01/13/2023	010523	REIMBURSEMENT FOR FOOTBALL STATE MEALS LESS PRE-PAYMENT	0	40.00	40.00
10 E 530 0100 28 8580 4300 0000 0000 1				General Fund/EXPENDITURES/BASIC EDUCATION		40.00	
122400	MCGRAW-HILL EDUCATION	01/13/2023	125256778001	PROFESSIONAL DEVELOPMENT K-5; 1/2 DAY VIRTUAL TRAINING-TITLE II FOR JANUARY 31, 2023	1100007835	1,500.00	1,500.00
10 E 530 5290 31 7330 1100 0000 0000 0				General Fund/EXPENDITURES/TITLE II TEACHER PRINCIPAL		1,500.00	
122401	MOSES LAKE HIGH SCHOOL ASB	01/13/2023	23019	Cheer Camp (Battle @ the Lake)	1300007803	100.00	200.00
10 E 530 0100 28 7580 4300 0000 0000 1				General Fund/EXPENDITURES/BASIC EDUCATION		100.00	
			23044	Cheer Camp (East Side Last Chance)	1300007803	100.00	
10 E 530 0100 28 7580 4300 0000 0000 1				General Fund/EXPENDITURES/BASIC EDUCATION		100.00	
122402	NAPA AUTO PARTS	01/13/2023	010523	TRANSPORTATION SUPPLIES ACCT #16420840	1000010538	66.49	66.49
10 E 530 9700 64 5610 0000 0000 0000 0				General Fund/EXPENDITURES/GENERAL SUPPORTIVE SERV		33.73	
10 E 530 9700 75 5610 0000 0000 0000 0				General Fund/EXPENDITURES/GENERAL SUPPORTIVE SERV		20.52	
10 E 530 9900 53 5610 0000 0000 0000 0				General Fund/EXPENDITURES/PUPIL TRANSPORTATION		12.24	
122403	NEWESD 101	01/13/2023	1232210635	FOOD SERVICE PROCUREMENT SERVICES FOR 2022-2023	1000010650	200.00	200.00
10 E 530 9800 44 7340 0000 0000 0000 0				General Fund/EXPENDITURES/FOOD SERVICES		200.00	
122404	NEWPORT SCHOOL DISTRICT	01/13/2023	123122	4th Annual MLK C-Squad Tournament	1300007856	100.00	100.00
10 E 530 0100 28 7580 4300 0000 0000 1				General Fund/EXPENDITURES/BASIC EDUCATION		100.00	
122405	NORTHWEST DISTRIBUTION	01/13/2023	1380807&3191318	FOOD & SUPPLIES	1000010537	36.79	1,313.37
10 E 530 9800 42 5630 0000 0000 0000 0				General Fund/EXPENDITURES/FOOD SERVICES		-102.64	
10 E 530 9800 44 5610 0000 0000 0000 0				General Fund/EXPENDITURES/FOOD SERVICES		139.43	

Check Nbr	Vendor Name	Check Date	Invoice Number	Invoice Desc	PO Number	Invoice Amount	Check Amount
			3187603-correction	FOOD & SUPPLIES-correct charge processed as credit	1000010537	144.96	
10 E 530 9800 42 5630 0000 0000 0000 0			General Fund/EXPENDITURES/FOOD SERVICES			144.96	
			3188861	FOOD & SUPPLIES	1000010537	1,131.62	
10 E 530 9800 42 5630 0000 0000 0000 0			General Fund/EXPENDITURES/FOOD SERVICES			1,131.62	
122406	NORTHWEST CHRISTIAN HIGH SCHOO	01/13/2023	010923	Wrestling Crusader Classic team entry fee 1-14-23	1300007798	300.00	300.00
10 E 530 0100 28 7580 4300 0000 0000 1			General Fund/EXPENDITURES/BASIC EDUCATION			300.00	
122407	OFFICE DEPOT	01/13/2023	279687755001	OPEN PURCHASE ORDER FOR BUILDING SUPPLIES (PAPER, TONER, ETC) RETURN	1100007869	-50.56	1,328.94
10 E 530 0100 27 5610 1100 0000 0000 0			General Fund/EXPENDITURES/BASIC EDUCATION			-50.56	
			281167286001	Building supplies-paper, lamination, batteries	1100007891	743.36	
10 E 530 0100 27 5610 1100 0000 0000 0			General Fund/EXPENDITURES/BASIC EDUCATION			743.36	
			281167286002	Building supplies-paper, lamination, batteries	1100007891	28.89	
10 E 530 0100 27 5610 1100 0000 0000 0			General Fund/EXPENDITURES/BASIC EDUCATION			28.89	
			281167286003	Building supplies-paper, lamination, batteries	1100007891	23.28	
10 E 530 0100 27 5610 1100 0000 0000 0			General Fund/EXPENDITURES/BASIC EDUCATION			23.28	
			281168617001	Building supplies-paper, lamination, batteries	1100007891	77.41	
10 E 530 0100 27 5610 1100 0000 0000 0			General Fund/EXPENDITURES/BASIC EDUCATION			77.41	
			281168622001	Building supplies-paper, lamination, batteries	1100007891	61.40	

Check Nbr	Vendor Name	Check Date	Invoice Number	Invoice Desc	PO Number	Invoice Amount	Check Amount
10 E 530 0100 27 5610 1100 0000 0000 0				General Fund/EXPENDITURES/BASIC EDUCATION		61.40	
			282285393001	White Copy Paper, White Board Cleaner, Purple Paper, Yellow Paper, Green Paper, Blue Paper, Pink Paper	1300007852	445.16	
10 E 530 0100 23 5610 4300 0000 0000 0				General Fund/EXPENDITURES/BASIC EDUCATION		445.16	
122408 OSPI CHILD NUTRITION SERVICES		01/13/2023	33183	FOOD COMMODITIES	1000010542	2,662.52	2,662.52
10 E 530 9800 42 5630 0000 0000 0000 0				General Fund/EXPENDITURES/FOOD SERVICES		2,662.52	
122409 OXARC INC		01/13/2023	0061360683	Argon and Stargon gas	1000010543	14.27	14.27
10 E 530 3100 27 5610 4300 2400 0000 0				General Fund/EXPENDITURES/VOCATIONAL		14.27	
122410 PACIFIC PETROLEUM & SUPPLY		01/13/2023	403122	OPEN PO FOR BUS PURCHASES	1000010546	287.94	287.94
10 E 530 9900 53 5610 0000 0000 0000 0				General Fund/EXPENDITURES/PUPIL TRANSPORTATION		287.94	
122411 PITNEY BOWES GLOBAL FINANCIAL		01/13/2023	3316859310	MAILING MACHINE LEASE #0040848019	1000010545	222.54	222.54
10 E 530 9700 13 7340 0000 0000 0000 0				General Fund/EXPENDITURES/GENERAL SUPPORTIVE SERV		222.54	
122412 QCL INC		01/13/2023	53133	ANNUAL RENEWAL-EMPLOYEE ASSISTANCE PROGRAM	1000010547	567.00	567.00
10 E 530 9900 52 7340 0000 0000 0000 0				General Fund/EXPENDITURES/PUPIL TRANSPORTATION		567.00	
122413 RIVERSIDE INSIGHTS		01/13/2023	INV147558	Woodcock Johnson Testing	1400007962	1,358.77	1,358.77
10 E 530 0200 27 5610 5400 0000 0000 0				General Fund/EXPENDITURES/ALTERNATIVE BASIC ED		1,358.77	
122414 RWC GROUP		01/13/2023	RA106005613:03	2022-2023 BUS PURCHASES	1000010549	2,290.84	3,791.18
10 E 530 9900 53 5610 0000 0000 0000 0				General Fund/EXPENDITURES/PUPIL TRANSPORTATION		2,290.84	
			RA106005924:01	2022-2023 BUS PURCHASES	1000010549	664.30	
10 E 530 9900 53 5610 0000 0000 0000 0				General Fund/EXPENDITURES/PUPIL TRANSPORTATION		664.30	
			XA106042572:01	2022-2023 BUS PURCHASES	1000010549	317.70	
10 E 530 9900 53 5610 0000 0000 0000 0				General Fund/EXPENDITURES/PUPIL TRANSPORTATION		317.70	
			XA106044884:01	2022-2023 BUS PURCHASES	1000010549	518.34	

Check Nbr	Vendor Name	Check Date	Invoice Number	Invoice Desc	PO Number	Invoice Amount	Check Amount
10 E 530 9900 53 5610 0000 0000 0000 0				General Fund/EXPENDITURES/PUPIL TRANSPORTATION		518.34	
122415	SAFEWAY ALBERTSON COMPANIES	01/13/2023	010323	FOOD SERVICE SUPPLIES ACCT #60821	1000010554	71.30	332.78
10 E 530 9800 42 5630 0000 0000 0000 0				General Fund/EXPENDITURES/FOOD SERVICES		25.92	
10 E 530 9800 44 5610 0000 0000 0000 0				General Fund/EXPENDITURES/FOOD SERVICES		45.38	
			010423	Supplies for Kitchen (bowls)	1400007976	10.74	
10 E 530 0200 27 5610 5400 0000 0000 0				General Fund/EXPENDITURES/ALTERNATIVE BASIC ED		10.74	
			010623	WEEKLY DOUGHNUTS FOR PBIS REWARDS	1300007770	61.94	
10 E 530 0100 23 5610 4300 0000 0000 0				General Fund/EXPENDITURES/BASIC EDUCATION		61.94	
			120922	SPED - LIFE SKILLS/ADULT DAILY LIVING KITCHEN FOOD AND SUPPLIES - 35 WEEKS	1300007763	21.41	
10 E 530 2100 27 5610 4300 0000 0000 0				General Fund/EXPENDITURES/SPED STATE		21.41	
			121222	class supplies	1400007971	82.42	
10 E 530 0200 27 5610 5400 0000 0000 0				General Fund/EXPENDITURES/ALTERNATIVE BASIC ED		82.42	
			121422	Cooking class, 12-14	1400007974	84.97	
10 E 530 0200 27 5610 5400 0000 0000 0				General Fund/EXPENDITURES/ALTERNATIVE BASIC ED		84.97	
122416	SCRANTON, DAPHNE D	01/13/2023	010523	REIMBURSE FOR ORNAMENT PACKETS FOR TITLE PARENT NIGHT	0	228.03	228.03
10 E 530 5100 27 5610 1100 3390 0000 0				General Fund/EXPENDITURES/TITLE I		228.03	
122417	TERRYS DAIRY	01/13/2023	121522	DAIRY FOR CUST #1513	1000010556	1,571.14	1,571.14
10 E 530 9811 42 5630 0000 0000 0000 0				General Fund/EXPENDITURES/FOOD SERV SUPPLY CHAIN ASSIST		1,571.14	
122418	USPS	01/13/2023	123022	PO Box 138 ANNUAL RENT JJSHS	1300007863	374.00	374.00
10 E 530 0100 23 7810 4300 0000 0000 0				General Fund/EXPENDITURES/BASIC EDUCATION		374.00	
122419	VERIZON WIRELESS	01/13/2023	9923316407	WIRELESS HOTSPOTS MONTHLY CHARGES FOR COVID CONNECTIVITY ACCT 342368558-00001	1000010559	405.54	405.54

Check Nbr	Vendor Name	Check Date	Invoice Number	Invoice Desc	PO Number	Invoice Amount	Check Amount
10 E 530 0100 32 7530 0000 1622 0000 1				General Fund/EXPENDITURES/BASIC EDUCATION		405.54	
122420	VK MATHISEN LAW PLLC	01/13/2023	00249	CONSULTING FEE TO HIRE NON-RESIDENT TEACHERS	1000010660	250.00	250.00
10 E 530 9700 11 7341 0000 0000 0000 0				General Fund/EXPENDITURES/GENERAL SUPPORTIVE SERV		250.00	
122421	WALTER E NELSON CO	01/13/2023	488136	Quartzite-Damp Mop, white floor pads, Liquid Swabby	2300006617	142.97	228.03
10 E 530 9700 63 5610 5400 0000 0000 0				General Fund/EXPENDITURES/GENERAL SUPPORTIVE SERV		142.97	
			488666	Quartzite- Top shape	2300006617	85.06	
10 E 530 9700 63 5610 5400 0000 0000 0				General Fund/EXPENDITURES/GENERAL SUPPORTIVE SERV		85.06	
122422	WAMOA	01/13/2023	01786	Wamoa Membership	2300006620	80.00	80.00
10 E 530 9700 64 7810 0000 0000 0000 0				General Fund/EXPENDITURES/GENERAL SUPPORTIVE SERV		80.00	
122423	WASBO	01/13/2023	200027316	WASBO PURCHASING WORKSHOP FOR MARA, TAPIA & FRANKO FEB 14 AND FEB 16 VIRTUAL	1000010623	720.00	1,460.00
10 E 530 9700 13 7330 0000 0000 0000 0				General Fund/EXPENDITURES/GENERAL SUPPORTIVE SERV		720.00	
			200027836	WASBO ASB Workshop January 10, 2023 Sheppard, Anderson, Boswell, Schulz	1300007864	740.00	
10 E 530 0100 28 7330 4300 0000 0000 1				General Fund/EXPENDITURES/BASIC EDUCATION		740.00	
122424	WA STATE DEPT OF LICENSING	01/13/2023	10191140607	Driver Abstracts-coach	1000010560	15.00	15.00
10 E 530 0100 28 7340 4300 0000 0000 1				General Fund/EXPENDITURES/BASIC EDUCATION		15.00	
122425	WSIPC DBA WASWUG ANNUAL CONFER	01/13/2023	w2023-122022-1151	WASWUG MARCH 5-7 for Renee W. \$335 Virtual	1100007897	335.00	1,005.00
10 E 530 0100 23 7330 1100 0000 0000 0				General Fund/EXPENDITURES/BASIC EDUCATION		335.00	
			w2023-122022-1160	WASWUG VIRTUAL CONFERENCE FOR MARA MARCH 5-7, 2022	1000010646	335.00	
10 E 530 9700 13 7330 0000 0000 0000 0				General Fund/EXPENDITURES/GENERAL SUPPORTIVE SERV		335.00	

Check Nbr	Vendor Name	Check Date	Invoice Number	Invoice Desc	PO Number	Invoice Amount	Check Amount
			w2023-122022-1229	WASWUG VIRTUAL CONFERENCE FOR REANNA MARCH 5-7, 2022	1000010646	335.00	
10 E 530 9700 13 7330 0000 0000 0000 0			General Fund/EXPENDITURES/GENERAL SUPPORTIVE SERV			335.00	
122426	ELAN CARDMEMBER SERVICE	01/13/2023	SA-120622B	WESTSIDE PIZZA Concessions	8300006974	132.00	2,815.43
40 E 530 1210 00 0000 4300 0000 0000 0			Associated Student Body Fund/EXPENDITURES/CONCESSIONS			132.00	
			SA-120622C	Dollar Tree-Walmart	8300006980	31.55	
40 E 530 1001 00 0000 4300 0000 0000 0			Associated Student Body Fund/EXPENDITURES/GENERAL			31.55	
			SA-120922	Chewelah Bowling Alley- FFA Holiday Party	8300006982	436.00	
40 E 530 4310 00 0000 4300 0000 0000 0			Associated Student Body Fund/EXPENDITURES/FFA			436.00	
			SA-121522	Operation Santa- North 40, Walmart, Clarks, Sety's	8300006983	966.10	
40 E 530 6300 00 0000 4300 0000 0000 0			Associated Student Body Fund/EXPENDITURES/PRIVATE MONEY			966.10	
			SA-121722	Comfort Inn- CDA HOTELS FOR TRI STATE WRESTLING TOURNAMENT DEC 16-17, 2022	8300006985	411.27	
40 E 530 2450 00 0000 4300 0000 0000 0			Associated Student Body Fund/EXPENDITURES/WRESTLING			411.27	
			SA-121922	Costco, Cash & Carry, Westside Concessions	8300006974	838.51	
40 E 530 1210 00 0000 4300 0000 0000 0			Associated Student Body Fund/EXPENDITURES/CONCESSIONS			838.51	
122427	SAFEWAY ALBERTSON COMPANIES	01/13/2023	120722	Root beer float supplies	8300006976	112.18	112.18
40 E 530 1070 00 0000 2200 0000 0000 0			Associated Student Body Fund/EXPENDITURES/JR HIGH FUND			112.18	
122428	WA STATE FFA ASSOC	01/13/2023	2021-787	Membership Dues 2022-2023	8300006986	829.00	829.00
40 E 530 4310 00 0000 4300 0000 0000 0			Associated Student Body Fund/EXPENDITURES/FFA			829.00	
			58 Computer	Check(s) For a Total of			186,512.38

	0	Manual	Checks For a Total of	0.00
	0	Wire Transfer	Checks For a Total of	0.00
	0	ACH	Checks For a Total of	0.00
	58	Computer	Checks For a Total of	186,512.38
Total For	58	Manual, Wire Tran, ACH & Computer Checks		186,512.38
Less	0	Voided	Checks For a Total of	0.00
			Net Amount	186,512.38

FUND SUMMARY

Fund	Description	Balance Sheet	Revenue	Expense	Total
10	General Fund	-121.19	0.00	182,876.96	182,755.77
40	Associated Student Body Fund	0.00	0.00	3,756.61	3,756.61

ETHICAL CONDUCT OF BOARD MEMBERS

Each board director has taken an oath of office to support the Constitutions of the United States and Washington state. The Chewelah School District School Board and each of its school directors is committed to upholding the oath of office and to ethical behavior.

Ethical behavior is an individual responsibility. Each school director and the board as a whole will base their conduct on these core ethical principles:

Objectivity – School directors must place the public’s interest before any private interest or outside obligation – choices need to be made on the merits.

Selflessness – School directors should not take actions or make decisions in the performance of their position in order to gain financial or other benefits for themselves, their family, or their friends.

Stewardship – School directors should conserve public resources and funds against misuse and abuse.

Transparency – School directors must practice open and accountable government. They should be as open as possible about their decisions and actions, while protecting truly confidential information.

Integrity – School directors should not place themselves under any financial or other obligation to outside individuals or organizations that might inappropriately influence them in the performance of their official duties.

Failure to adhere to these core ethical principles or failure to comply with other policies adopted by the board or the law may result in the school board taking formal censure of the offending school director in accordance with **1825 – Addressing School Board Director Violations.** Modify as accurate for your district.

<u>Cross References:</u>	<u>Policy 1111</u>	<u>Oath of Office</u>
	<u>Policy 1220</u>	<u>Board Officers and Duties of Board Members</u>
	<u>Policy 1611</u>	<u>Conflicts of Interest (Districts with fewer than 2,000 students)</u>
	<u>Policy 5271</u>	<u>Reporting Improper Governmental Action (Whistleblower Protection)</u>

<u>Legal References:</u>	<u>RCW 28A.320.040</u>	<u>Bylaws for board and school government</u>
	<u>RCW 28A.635.050</u>	<u>Certain corrupt practices of school officials</u>
	<u>RCW 42.20</u>	<u>Misconduct of Public Officers</u>

Adoption Date:

Chewelah School District #36

Revised:

Classification: Discretionary

LENGTH OF WORKDAY

Administrators

Administrators are Fair Labor Standards Act (FLSA) exempt and do not have regularly set, pre-determined work hours. Administrators are expected to report to work during the established public hours of the site(s) to which the administrator is assigned and consistent with all district expectations and directives. Administrators are expected to work before and after established public hours of the assigned site(s) to accomplish job duties.

Certificated Staff

Regular building hours for teachers and other certificated, non-administrative staff will~~shall~~ be one-half hour before school starts to one-half hour after school ends, unless otherwise negotiated, including a 30-minute duty-free lunch period. Individual schools may request a board waiver from these district-wide provisions consistent with applicable provisions of collective bargaining agreements. The starting and dismissal times for students, which may vary from school to school, will~~shall~~ be determined by the district.

Fulfilling professional responsibilities will often require that teachers ~~shall~~ spend time outside of building hours. Such professional responsibilities include:

- A. Preparing for instruction of classes ~~planning lessons;~~
- B. Consulting with students, ~~grading assignments, completing paperwork;~~
~~when necessary;~~
- C. Improving communication ~~Consulting~~ with parents, including but ~~when it is not limited possible for the parent to, initiating contact-meet~~ with parents after or before ~~the teacher during~~ building hours;
- D. Participating ~~in~~ curriculum development committees leading towards the improvement of the educational program;
- E. Attending staff meetings, including ~~attending necessary professional development, in-service training~~ provided by the district, to improve and maintain ~~in the area of teaching skills; needing improvement;~~
- F. Supervising and directing co-curricular activities not specifically included in the district's co-curricular program; and
- G. Participating in such other activities that pertain to the district's educational program.

~~Unless otherwise specified, the work day for certificated staff assigned to the district administrative center and all classified staff shall be 8 hours per day exclusive of the lunch period.~~

Classified Staff

A classified hourly staff member willshall be paid at the rate of one and one-half times the salary schedule rate when he/she works for more than 40 hours during the regular work week or consistent with applicable provisions of collective bargaining agreements. The regular work day willshall include one 15 minute break for each four hours of work. A lunch period ~~of not to exceed one hour~~ willshall be scheduled, but willshall not be counted for pay purposes. The district willshall be responsible for establishing the work day schedule for each classified staff member.

In the event a supervisor requests that a staff member work beyond the specified working hours and thus exceeds the 40 hours during the established work week, the district may grant, at the staff member's request, compensating time off in lieu of overtime pay consistent with applicable provisions of collective bargaining agreements.

An unrepresented staff member may accumulate up to 240 hours of compensatory compensating time. When the staff member reaches the 240-hour limit compensatory time will cease to accrue and the staff member, he/she must either take compensating time off or receive pay for such excess hours.

~~Custodial/maintenance and central-office staff willshall report for work when schools are closed for bad weather when. Building office staff are not ordinarily required by the superintendent/designee, to report to work when schools are closed for bad weather.~~

Legal References:

29 U.S.C § 201 et seq. Fair Labor Standards Act
RCW 28A.405.140 Assistance for teacher may be required after evaluation
RCW 28A.405.466 Presence of certificated personnel at schools before and after school — Policy
RCW 49.46.120 Chapter establishes minimum standards and is supplementary to other laws — More favorable standards unaffected
RCW 49.46.130 Minimum rate of compensation for employment in excess of forty-hour work week — Exceptions
WAC 296-128-550 Regular rate of pay
WAC 296-128-560 Compensating time off in lieu of overtime pay

Management Resources:

2015 - October Policy Issue

Policy News, June 2006 Certificated Staff Work Hours
2012 - August Issue

Adoption Date:02.19.97
Chewelah School District #36
Revised Date: 08.23.06
Classification: ~~Optional~~Discretionary

Chewelah Schools – *Where Dreams Begin*

Our Mission: Ensuring learning for all students

Student Travel Proposal

All information applicable to the trip, as outlined in Procedure 2320P, is to be attached to this cover page (e.g., purpose, itinerary, supervision, etc).

All overnight trips require approval of the Principal and the Board of Directors for overnight trip approval. Trip request must be complete and received by the District Office by the 2nd Wednesday of each month for Board Approval. The Board will approve the request on the 3rd Wednesday of the month.

School Jenkins Activity FFA Floriculture Team

Person in Charge Markel Submission Date 1/9/23

Purpose of Trip FFA Team Competition

Date(s) of Trip 2/3-2/4, 2/24-2/25, 3/23-3/25

Destination(s) East Valley, Yakima, Wapato, Snohomish

Number of Students 5-16

Chaperones Mrs. Markel

Total Cost Registration N/A Housing Approx 600⁰⁰ each event
Meals \$240⁰⁰ each Trip Other Costs N/A

Funding Source(s) Building Funds \$ _____ District Funds \$ Transportation ASB \$ _____
Fundraising \$ _____ Student/Parent \$ _____ Other \$ 840⁰⁰
FFA Each Trip

Per Student Cost \$140⁰⁰

Approval signatures Principal [Signature] Athletic Director _____

Overnight Trip Proposals

Chewelah FFA Floriculture Team Season

Who: Chewelah FFA Floriculture Team 5-6 Students will Travel to make up the Team.

What: Overnight trips during the season.

When/Where: 2/3-2/4 @East Valley-Yakima

2/24-2/25 @ Wapato

3/23-3/25 State @ Snohomish

How/Transportation: 1 Van

Chaperones: Mrs. Markel

Agenda: East Valley and Wapato- Leave school Friday at noon to 3 pm, depending on weather to arrive in the evening. Check into Hotel, have dinner and get a good nights sleep. Competition check in will begin at 7:30 AM. Competition usually goes from 8am to 3 pm, Return Home.

Snohomish for State- Full Day of Travel on the 23rd Competition on 3/24 and Drive home on 3/25 with an estimated arrival time of 3pm.

Cost: Transportation is to be paid for by JHS CTE through the field trip budget. There are no entry fees. The Student Led FFA Club will be responsible for the Hotel Costs and 2 meals per trip/ Hotel provides breakfast. State will be paid for like other State events. Students have opportunities to fundraise for FFA through Concessions and Greenhouse Sales.

Point of Contact; Aubrey Markel Chewelah FFA Advisor

ADDRESSING SCHOOL DIRECTOR VIOLATIONS

Purpose

The Chewelah School District School Board and each of its school directors are committed to faithful compliance with the law, provisions of the Board's policies, and exercising good judgment.

Policy Statement

The Board recognizes that failure to deal with deliberate or continuing violations of the law, Board policies, or lapses in good judgment by its school board members risks the loss of community confidence and damages the Board's ability to govern effectively. Therefore, in the event of a Board member's willful and/or continuing violation of law, policy, or judgment the Board will address the issue through the following process, which is intended to escalate only as necessary:

1. Conversation in a private setting between the offending School Director and the Board Chair or another individual School Director, identified by the Board;
2. Discussion in a properly convened executive session between the offending School Director and the full Board;
3. Possible removal of the offending School Director from any leadership or committee positions to which the offending School Director has been appointed or elected to by the Board;
4. Censure of the offending School Director by adopting a resolution in an open meeting as a means of separating the Board's focus and intent from those of the offending School Director.

<u>Cross References:</u>	<u>Policy 1111</u>	<u>Oath of Office</u>
	<u>Policy 1220</u>	<u>Board Officers and Duties of Board Members</u>
	<u>Policy 1611</u>	<u>Conflicts of Interest (Districts with fewer than 2,000 students)</u>
	<u>Policy 1815</u>	<u>Ethical Conduct for School Directors</u>
<u>Legal References:</u>	<u>RCW 28A.320.040</u>	<u>Bylaws for board and school government</u>
	<u>RCW 28A.635.050</u>	<u>Certain corrupt practices of school officials</u>

Adoption Date:

Chewelah School District #36

Revised:

Classification: Discretionary

SCHOOL-BASED THREAT ASSESSMENT

The Board is committed to providing a safe and secure learning environment for students and staff. This policy establishes a school-based threat assessment program to provide for timely and methodical school-based threat assessment and management.

Threat assessment best occurs in school climates of safety, respect, and emotional support. Student behavior, rather than a student's demographic or personal characteristics will serve as the basis for a school-based threat assessment.

The threat assessment process is distinct from student discipline procedures. The mere fact that the district is conducting a threat assessment does not by itself necessitate suspension or expulsion and the district will not impose suspension or expulsion, including emergency expulsion, solely for investigating student conduct or conducting a threat assessment. Further, suspension, or other removal from the school environment can create the risk of triggering either an immediate or a delayed violent response, unless such actions are coupled with containment and support. However, nothing in this policy precludes district personnel from acting immediately to address an imminent threat, including imposing an emergency expulsion, if the district has sufficient cause to believe that the student's presence poses an immediate and continuing danger to other students or school personnel or an immediate and continuing threat of material and substantial disruption of the educational process.

Structure of Threat Assessment Teams

The superintendent shall establish and ensure the training of a multidisciplinary, multiagency threat assessment team or more than one such team to serve district schools. As the threat assessment team must be multidisciplinary and multiagency, it might include persons with expertise in:

- Counseling, such as a school counselor, a school psychologist and/or school social worker,
- Law enforcement, such as a school resource officer,
- School administration, such as a principal or other senior administrator,
- Other district or school staff,
- Community resources,
- Special education teachers, and a
- Practicing educational staff member.

Not every multidisciplinary team member need participate in every threat assessment. When faced with a potential threat by, or directed towards, a student receiving special education services, the threat assessment team must include a team member who is a special education teacher.

Although parents, guardians, or family members are often interviewed as part of the threat assessment process, neither the student nor the student's family members are part of the threat assessment team. This does not diminish the district's commitment that school personnel will

In cases where the student whose behavior is threatening or potentially threatening also has a disability, the threat assessment team aligns intervention strategies with the student's individualized education program (IEP) or the student's plan developed under section 504 of the rehabilitation act of 1973 (section 504 plan) by coordinating with the student's IEP team or section 504 plan team. Although some of the functions of a school-based threat assessment may run parallel to the functions of a student's IEP team or 504 plan team, school-based threat assessments remain distinct from those teams and processes.

Data Collection, Review and Reporting

The superintendent shall establish procedures for collecting and submitting data related to the school-based threat assessment program that comply with OSPI's monitoring requirements, processes, and guidelines.

Other tasks of threat assessment team

The threat assessment team may also participate in other tasks that manage or reduce threatening or potentially threatening behavior and increase physical and psychological safety. This may include:

- Providing guidance to students and staff regarding recognition of behavior that may represent a threat to students, staff, school, the community, or the individual;
- Providing informational resources for community services boards or health care providers for medical evaluation or treatment, as appropriate;
- Assessing individuals other than students whose behavior poses a threat to the safety of students or staff and notify the superintendent or designee of such an individual.

Cross References:	Board Policy 2121	Substance Abuse Program
	Board Policy 2145	Suicide Prevention No CSD Policy, WSSDA Encouraged
	Board Policy 2161	Special Education and Related Services for Eligible Students
	Board Policy 2173	Education of Students with Disabilities Under Section 504 of the Rehabilitation Act of 1973
	Board Policy 3143	Notification and Dissemination of Information About Student Offenses and Notification of Threats of Violence or Harm
	Board Policy 3231	Student Records
	Board Policy 3241	Student Discipline
	Board Policy 3432	Emergencies
	Board Policy 4315	Regulation of Dangerous Weapons on School Premises

In cases where the student whose behavior is threatening or potentially threatening also has a disability, the threat assessment team aligns intervention strategies with the student's individualized education program (IEP) or the student's plan developed under section 504 of the rehabilitation act of 1973 (section 504 plan) by coordinating with the student's IEP team or section 504 plan team. Although some of the functions of a school-based threat assessment may run parallel to the functions of a student's IEP team or 504 plan team, school-based threat assessments remain distinct from those teams and processes.

Data Collection, Review and Reporting

The superintendent shall establish procedures for collecting and submitting data related to the school-based threat assessment program that comply with OSPI's monitoring requirements, processes, and guidelines.

Other tasks of threat assessment team

The threat assessment team may also participate in other tasks that manage or reduce threatening or potentially threatening behavior and increase physical and psychological safety. This may include:

- Providing guidance to students and staff regarding recognition of behavior that may represent a threat to students, staff, school, the community, or the individual;
- Providing informational resources for community services boards or health care providers for medical evaluation or treatment, as appropriate;
- Assessing individuals other than students whose behavior poses a threat to the safety of students or staff and notify the superintendent or designee of such an individual.

<u>Cross References:</u>	<u>Board Policy 2121</u>	<u>Substance Abuse Program</u>
	<u>Board Policy 2145</u>	<u>Suicide Prevention No CSD Policy, WSSDA Encouraged</u>
	<u>Board Policy 2161</u>	<u>Special Education and Related Services for Eligible Students</u>
	<u>Board Policy 2173</u>	<u>Education of Students with Disabilities Under Section 504 of the Rehabilitation Act of 1973</u>
	<u>Board Policy 3143</u>	<u>Notification and Dissemination of Information About Student Offenses and Notification of Threats of Violence or Harm</u>
	<u>Board Policy 3231</u>	<u>Student Records</u>
	<u>Board Policy 3241</u>	<u>Student Discipline</u>
	<u>Board Policy 3432</u>	<u>Emergencies</u>
	<u>Board Policy 4315</u>	<u>Regulation of Dangerous Weapons on School Premises</u>

Board Policy 4411

Relations with Law Enforcement, Child
Protective Agencies and the County
Health Department

Legal References: CFR 34, Part 99

Family Educational Rights and
Privacy Act Regulations

Chapter 28A.320 RCW

Chapter 28A.300 RCW

Adoption Date:

Chewelah School District #36

Revised:

Classification: Essential

STUDENT RECORDS

The district ~~shall~~ will maintain those student records necessary for the educational guidance and/or welfare of students, for orderly and efficient operation of schools and as required by law. All information related to individual students ~~shall~~ will be treated in a confidential and professional manner. The district will use reasonable methods to ensure that teachers and other school official obtain access to only those education records for which they have legitimate educational interests. When information is released in compliance with state and federal law the district and district employees are immune from civil liability unless they acted with gross negligence or in bad faith.

The district will retain records in compliance with the current, approved versions of the Local Government General Records Retention Schedule (CORE) and the School Districts and Educational Service Districts Records Retention Schedule, both of which are published on the Secretary of State's website at www.sos.wa.gov/archives/recordsretentionschedules.aspx.

Student records are the property of the district but ~~shall~~ will be available in an orderly and timely manner to students and parents. "Parent" includes the State department of social and Health Services when a minor student has been found dependent and placed in state custody. A parent or adult student may challenge any information in a student record believed inaccurate, misleading or in violation of the privacy or other rights of the student.

Student records ~~shall~~ will be forwarded to other school agencies upon request. A high school student may grant authority to the district, ~~which permits~~ permitting prospective employers to review the student's transcript. Parental or adult student consent ~~shall~~ will be required before the district may release student records other than to a school agency or organization, except as otherwise provided by law.

~~A grades report, transcript, or A diploma shall may not be released until a student has made restitution for damages assessed as a result of losing or damaging school materials or equipment. If a student has transferred to another school district that has requested the student's records, but the student has an outstanding fee or fine, only records pertaining to the student's academic performance, special placement, immunization history and discipline actions shall be sent to the enrolling school. The content of those records shall be communicated to the enrolling district within two school days and copies of the records shall be sent as soon as possible. The official transcript will not be released until the outstanding fee or fine is discharged. The enrolling school shall be notified that the official transcript is being withheld due to an unpaid fee or fine.~~

The superintendent ~~shall~~ will establish procedures governing the content, management and control of student records.

Cross References:	Board Policy <u>3115</u>	<u>Students Experiencing Homelessness –</u>
		<u>Enrollment Rights and Services</u>
	<u>3211</u>	<u>Gender-Inclusive Schools</u>
	<u>3520</u>	<u>Student Fees, Fines, Charges</u>
	<u>4020</u>	<u>Confidential Communications</u>
	<u>4040</u>	<u>Public Access to District Records</u>

Legal References:	<u>42 U.S.C 11431 et seq.</u>	<u>McKinney-Vento Homeless Assistance Act</u>
	<u>20 U.S.C. § 1232g</u>	Family Educational Rights and Privacy Act
	CFR 45, Part 99	Family Educational Rights and Privacy Act Regulations
	<u>42 CFR § 2.14</u>	<u>Minor patients</u>
	<u>RCW 9.02.100</u>	<u>Reproductive privacy – Public policy</u>
	<u>RCW 28A.150.510</u>	<u>Transmittal of education records to DSHS – Disclosure of educational records – Data sharing agreements – Comprehensive needs requirement document – Report</u>
	<u>RCW 28A.195.070</u>	<u>Official transcript withholding</u> <u>Transmittal of information</u>
	<u>RCW 28A.225.151</u>	<u>Reports</u>
	<u>RCW 28A.225.330</u>	Enrolling students from other districts — Requests for information and permanent records — Withheld transcripts — Immunity from liability — Notification to teachers and security personnel — Rules
	<u>RCW 28A.230.120</u>	High school diplomas — Issuance — Option to receive final transcripts — Notice
	<u>RCW 28A.230.180</u>	Educational and career opportunities in the military, student access to information on, when
	<u>RCW 28A.600.475</u>	<u>Exchange of information with law enforcement and juvenile court officials – Notification of parents and students.</u>
	<u>RCW 28A.605.030</u>	<u>Student education records – Parental review—release of records— Procedure.</u>
	<u>RCW 28A.635.060</u>	Defacing or injuring school property — Liability of <u>pupil, parent or guardian – Withholding grades, diploma, or transcripts – Suspension and restitution – Voluntary work program as alternative – Rights protected</u>
	<u>RCW 40.24.030</u>	Address Confidentiality Program — Application — Certification
	<u>Ch. 70.02 RCW</u>	<u>Medical records—health care information access and disclosure</u>
	<u>RCW 70.02.220</u>	<u>Sexually transmitted diseases— Permitted and mandatory disclosures</u>

<u>RCW 70.02.240</u>	<u>Mental health services—Minors— Permitted disclosures</u>
<u>RCW 70.02.265</u>	<u>Adolescent behavioral health services— Disclosure of treatment information and records—Restrictions and requirement—Immunity from liability</u>
WAC 392-500-025	Pupil tests and records — Pupil personnel records — School district policy in writing
Chapter 392-415 WAC	Secondary education — standardized high school transcript
WAC 181-87-093	Failure to assure the transfer of student record information or student records
WAC Chapter 246-105 WAC	Immunization of child care and school children against certain vaccine- preventable diseases
<u>Chapter 392-172A WAC</u>	<u>Rules for the provision of special education</u>
<u>Chapter 392-182 WAC</u>	<u>Student Health Records</u>
<u>WAC 392-121-182</u>	<u>Alternative learning experience requirements</u>
<u>WAC 392-122-228</u>	<u>Alternative learning experiences for juvenile students incarcerated in adult jail facilities</u>

Management Resources: *Policy News*, April 2001

Compliance Office Provides FERPA
Update

Policy News, December 2003

Updated Legal References for
Catheterization, Facilities Planning
and Student Records Policies

2010 – February Issue

2013 – February Issue

2014 – December Issue

Records Retention Schedule for School Districts and ESDs (updated 2014)

2018 – December Policy Issue

Adoption Date: 02.19.97
Chewelah School District #36
Revised: 02.18.04
Classification: Essential

CHILD ABUSE, AND NEGLECT ~~AND EXPLOITATION PREVENTION~~

~~Because e~~Child abuse, ~~or neglect, including and~~ exploitation are violations of children's human rights and an obstacle to their educational development. ~~¶~~The board directs that staff ~~shall~~ will be alert for any evidence of such abuse, ~~or neglect, or including~~ exploitation.

For purposes of this policy, the term "child" means anyone under the age of 18.

~~For purposes of this policy, "e~~Child abuse, ~~or neglect or exploitation" shall mean:~~

- ~~A. — Inflicting physical injury on a child by other than accidental means, causing death, disfigurement, skin bruising, impairment of physical or emotional health, or loss or impairment of any bodily function.~~
 - ~~B. — Creating a substantial risk of physical harm to a child's bodily functioning.~~
 - ~~C. — Committing or allowing to be committed any sexual offense against a child as defined in the criminal code, or intentionally touching, either directly or through the clothing, the genitals, anus or breasts of a child for other than hygiene, childcare or health care purposes.~~
 - ~~D. — Committing acts which are cruel or in humane regardless of observable injury. Such acts may include, but are not limited to, instances of extreme discipline demonstrating a disregard of a child's pain or mental suffering.~~
 - ~~E. — Assaulting or eriminally mistreating a child as defined by the criminal code.~~
 - ~~F. — Failing to provide food, shelter, clothing, supervision or health care necessary to a child's health or safety.~~
 - ~~G. — Engaging in actions or omissions resulting in injury to, or creating a substantial risk to the physical or mental health or development of a child.~~
 - ~~H. — Failing to take reasonable steps to prevent the occurrence of the preceeding actions.~~
- A. Injury of a child by any person under any circumstances which cause harm to the child's health, welfare, or safety;
 - B. Sexual abuse or sexual exploitation by any person under circumstances which cause harm to the child's health, welfare, or safety; or
 - C. The negligent treatment or maltreatment of a child by a person responsible for or providing care to the child.

Physical discipline of a child, including the reasonable use of corporal punishment, is not considered abuse when it is reasonable and moderate and is inflicted by a parent or guardian for the purposes of restraining or correcting the child.

Children (including other students), family members, and any other adult can engage in child abuse or neglect. This may include abuse by another minor and so may be included in incidents of student on student misconduct. Staff should report all incidents of suspected child abuse or neglect regardless of the age of the person who engages in it.

Staff should not focus on a person's mental status to determine if they have committed child abuse or neglect. The law governing mandated reporting does not allow for exceptions for people with medical conditions that may mitigate the intent for committing child abuse or neglect.

When feasible, the district will provide community education programs for prospective parents, foster parents and adoptive parents on parenting skills and on the problems of child abuse and methods to avoid child abuse situations. The district ~~shall~~ will also encourage staff to participate in in-service programs that ~~deal with~~ address the issues surrounding child abuse or neglect.

The superintendent ~~shall~~ will develop reporting procedures, ~~including sample indicators of abuse and neglect, and shall disseminate the procedures to and provide them to~~ all staff on an annual basis. The purpose is to identify and timely report ~~as soon as possible to the proper authorities~~ all evidence of child abuse or neglect to the proper authorities. Staff ~~shall~~ will receive training regarding reporting obligations during their initial orientation and every three years after initial employment.

~~Professional~~ All staff are legally responsible for reporting all suspected cases of child abuse ~~and or~~ neglect to the proper authorities and/or the appropriate school administrator. ~~A certificated or classified school employee who has knowledge or reasonable cause to believe that a student has been a victim of physical abuse or sexual misconduct by another school employee shall report such abuse or misconduct to the appropriate school administrator. The administrator shall report to the proper law enforcement agency if he or she has reasonable cause to believe that the misconduct or abuse has occurred as required under RCW 26, 44.030. Under state law staff are free from liability for reporting instances of abuse or neglect and are criminally liable for failure to do so. A reasonable suspicion of child abuse or neglect. However, failing to report the incident may result in criminal liability regardless of whether the authorities determine the incident is provable in a subsequent legal proceeding.~~

Staff need not verify a report that a child has ~~in fact~~ been abused or neglected. ~~Any conditions or information that may reasonably be related to abuse or neglect should be reported.~~ Legal authorities have the responsibility for investigating each case and taking ~~such~~ action as is appropriate under the circumstances.

Cross References: Board Policy 4411 Relations with the Law Enforcement, Child Protective Agencies and the County Health Department
 Board Policy 5253 Maintaining Professional Staff/Student Boundaries

Legal References: RCW 13.34.300 Relevance of ~~F~~ failure to cause juvenile to attend school as evidence under neglect petition
 RCW 26.44.020 Child abuse--Definitions
 RCW 26.44.030 Reports--Duty and authority to make--Duty of receiving agency-- Duty to notify -- Case planning and consultation -- Penalty for unauthorized exchange of information --

Filing dependency petitions — Investigations
— Interviews of children — Records — Risk
assessment process

~~26.44.070~~

~~RCW 28A.620.010~~

~~RCW 28A.620.020~~

~~Central registry of reported cases of child abuse~~

~~Community education provisions—Purposes~~

~~Community education provisions—Restrictions—~~

~~Classes on parenting skills and child abuse~~
~~prevention encouraged~~

~~RCW 43.43.830(6)~~

~~Background checks--Access to children or~~
~~vulnerable persons - Definitions~~

~~RCW 28A.320.160~~

~~Alleged sexual misconduct by school employee—~~
~~Parental notification—Information on public~~
~~records act.~~

~~RCW 28A.400.317~~

~~Physical abuse or sexual misconduct by school~~
~~employees—Duty to Report--Training~~

~~WAC 388-15-130(3)~~
~~exploitation~~

~~Definition of child abuse, neglect or~~

~~WAC 110-30-0030~~

~~What is child abuse or neglect?~~

~~AGO 1987, No. 9~~

~~Children-Child Abuse-Reporting by School~~
~~Officials - Alleged Abuse by Student~~

Management

Resources:

2015 – June Policy Issue

2010 – April Issue

Policy News, February 2007 Physical Abuse and Sexual Misconduct Notice
Requirements

Policy News, June 1999 23% of districts out of compliance on child abuse
policies

Department of Children, Youth & Family

(<https://www.dcyf.wa.gov/safety/what-is-abuse>)

Adoption Date: 01.19.00

Chewelah School District #36

Revised: 04.18.07

Classification: Essential

HIGH SCHOOL EQUIVALENCY CERTIFICATE OF
EDUCATIONAL COMPETENCY
(Formerly Known as GED)

High School Equivalency Certificates of educational competency will be awarded by the Superintendent of Public Instruction and the State Board for Community and Technical Colleges.

Eligibility to take high school equivalency test

The following individuals are eligible to take the high school equivalency test:

- A. Any person aged nineteen or over who has not graduated from a public or private high school.
- B. Any person between the ages of sixteen and nineteen who has not graduated from a public or private high school and who has been adjudged by a school district to have a substantial and warranted reason for leaving the regular high school program.
- C. Any student aged sixteen or over who has completed an education center individual program in accordance with chapter 392-185 WAC.
- D. Any person between the ages of sixteen and twenty-one who has not graduated from public or private high school and is currently enrolled in the open doors program.
- E. Any person between the ages of sixteen and nineteen who has not graduated from a public or private high school, and who has completed a program of home-based instruction in compliance with RCW 28A.225.010(4) as certified by the written and notarized statement of the parent or legal guardian who provided the home-based instruction.
- F. Any person who is an active member of the military, national guard, or reserves and has not received a high school diploma.
- G. Adjudicated youth under the director of prisons, jails, detention centers, parole and probation offices, and other correctional facilities while enrolled in school if so ordered by a court or officer of the court.

To be eligible for a certificate of educational competency, a student who is 16 years of age or older but under 19 years of age must have a substantial and warranted reason for leaving the regular high school program, or have been home schooled.

Determination of substantial and warranted reason for leaving the regular high school program

The student may apply either to the resident district or the school the student last attended in the State of Washington. The application must be signed by the student's parent and will include the recommendation of the superintendent/designee. Reasons for withdrawal to seek a certificate of education competency may include: A person between the ages of sixteen and nineteen who has not graduated from a public or private high school may apply to either the district in which they reside or the last Washington district they attended for a determination that they have a substantial and warranted reason for leaving the regular high school education program.

The application must be submitted to a designated employee who has empowered by the district to make determinations about whether a person has a substantial and warranted reason for leaving the regular high school program

Upon receiving the application, the designated employee will evaluate the facts and make a determination. The determination of the designated employee shall be in writing and signed by the employee.

A substantial and warranted reason for leaving the regular high school program exists if one or more of the following applies:

- A. Personal problems which seriously impair the student's ability to make reasonable progress toward high school graduation;
- B. A financial crisis which directly affects the student and necessitates the student's employment during school hours;
- C. A determination by the designated employee of the district that it is in the best interests of the student to withdraw in order to enter a postsecondary institution or the military, or to engage in employment; or
- D. ~~The student has been home-schooled and has essentially completed high school work.~~

No person under eighteen years of age may be adjudged to have a substantial and warranted reason for leaving the regular high school education program unless their parent, guardian, or legal custodian agrees that dropping out of high school is in the minor's best interests.-

~~Any student who feels that the denial to apply for a certificate of educational competency was unwarranted may appeal to the board of directors.~~ If the designated employee determines there is not a substantial and warranted reason for leaving the regular high school education program, the person may appeal that decision to the board of directors. The board of directors will make a decision within 30 calendar days of the request and such decision will be final, subject to an appeal to a court of law pursuant to RCW 28A.645.010.

Cross References:	Board Policy 3114	Part-Time, Home-Based, or Off-Campus Students
Legal References:	RCW 28A.205.030	Reentry of prior dropouts into common schools, rules — Eligibility for <u>GED test to earn a high school equivalency certificate</u>
	RCW 28A.305.190	Eligibility to take <u>GED test to earn a high school equivalency certificate</u>
	Chapter 180-96 WAC	General Educational Development (GED) Test
	Chapter 131-48 WAC	<u>Certificate of educational competence</u> <u>High school Equivalency Certificate</u>

Adoption Date: 10.06.22
Chewelah School District #36
Revised:
Classification: Essential